

# Proteomic analysis of *Plasmodium* in the mosquito: progress and pitfalls

M. N. WASS<sup>1</sup>, R. STANWAY<sup>2,3</sup>, A. M. BLAGBOROUGH<sup>2</sup>, K. LAL<sup>2</sup>, J. H. PRIETO<sup>4</sup>, D. RAINE<sup>2</sup>, M. J. E. STERNBERG<sup>1</sup>, A. M. TALMAN<sup>2,5</sup>, F. TOMLEY<sup>6</sup>, J. YATES III<sup>4</sup> and R. E. SINDEN<sup>2\*</sup>

<sup>1</sup> The Centre for Bioinformatics, Department of Life Sciences, Imperial College, London SW7 2AZ

<sup>2</sup> The Malaria Centre, Department of Life Sciences, Imperial College, London SW7 2AZ

<sup>3</sup> University of Bern, Institute of Cell Biology, Baltzerstrasse 4, CH-3012 Bern

<sup>4</sup> The Scripps Research Institute, 10550 North Torrey Pines Rd., Department of Chemical Physiology, SR11, La Jolla, CA 92037

<sup>5</sup> Department of Microbial Pathogenesis, Yale University School of Medicine, 295 Congress Avenue, New Haven, CT 06519

<sup>6</sup> Pathology & Infectious Diseases, The Royal Veterinary College, Hawkshead Lane, North Mymms, Hatfield, Hertfordshire AL9 7TA

(Received 17 November 2011; revised 10 January 2012; accepted 11 January 2012; first published online 16 February 2012)

## SUMMARY

Here we discuss proteomic analyses of whole cell preparations of the mosquito stages of malaria parasite development (i.e. gametocytes, microgamete, ookinete, oocyst and sporozoite) of *Plasmodium berghei*. We also include critiques of the proteomes of two cell fractions from the purified ookinete, namely the micronemes and cell surface. Whereas we summarise key biological interpretations of the data, we also try to identify key methodological constraints we have met, only some of which we were able to resolve. Recognising the need to translate the potential of current genome sequencing into functional understanding, we report our efforts to develop more powerful combinations of methods for the *in silico* prediction of protein function and location. We have applied this analysis to the proteome of the male gamete, a cell whose very simple structural organisation facilitated interpretation of data. Some of the *in silico* predictions made have now been supported by ongoing protein tagging and genetic knockout studies. We hope this discussion may assist future studies.

Key Words: *Plasmodium*, mosquito, proteome, ookinete, micronemes, surface, microgamete.

## INTRODUCTION

By the mid 1980s dissection of the malaria life cycle by electron microscopy had largely been accomplished. From this morphological analysis it was recognised that the parasite essentially employed just three cell strategies, namely: (1) invasion/dispersal as the parasites move from cell-to-cell and host-to-host; (2) vegetative growth/cell replication in the liver, in the bloodstream of the vertebrate host, and in the haemocoel of the mosquito vector; and (3) sex—which begins in the formation of dimorphic gametocytes in the bloodstream of the vertebrate host and progresses through gamete formation, fertilization and meiosis in the young ookinete—all within the bloodmeal of the mosquito vector (Sinden, 1978). Concurrent studies on the dormant liver stages responsible for relapses in *P. vivax* (hypnozoites) had characterized these elusive parasites at the levels of biology and light microscopy (Krotoski, 1985), however the possible physiological parallels with the arrested gametocyte and sporozoite as they await transmission to and from the mosquito vector, had not yet been recognised.

The sequencing of the genomes of the malarial parasites, their human and rodent laboratory hosts and the mosquito vector has since revolutionised the molecular analysis of the parasite life cycle. The resultant potential of both high throughput transcriptomic- (Kappe *et al.* 2001; Bozdech *et al.* 2003; Silvestrini *et al.* 2005) and proteomic-analysis (Lasonder *et al.* 2002, 2008; Florens *et al.* 2002; Hall *et al.* 2005; Khan *et al.* 2005; Tarun *et al.* 2008) to dissect the parasite differentiation through the life cycle has been illuminating.

Recognising the very high throughput possible using microarray technologies why have we chosen the more challenging proteomic approach? For our laboratories two drivers existed: first having described the parasite at the ultrastructural level the inevitable question to arise was ‘What are all these exquisite structures actually doing, and what are the molecular complexes/machines by which they achieve these functions?’ As an example, as we write this manuscript we read that the sole purpose of one rudimentary, but nonetheless complex organelle—the apicoplast—is apparently ‘just’ the production of isopentenyl pyrophosphate (Yeh and deRisi, 2011). Second, whilst studying the expression of a major ookinete surface antigen

\* Corresponding author: email: r.sinden@imperial.ac.uk.

Table 1. The composition and quantities of the parasite and cell samples used to generate individual proteomes, and the resultant number of protein 'hits' identified.

Stage	Cell fraction	Purity (by microscopy)	Quantity	Hits
Liver stages	N.D	NA	NA	NA
Asexual blood stages	Whole cell	100%	$> 2 \times 10^8$	1139
Gametocytes	Whole cell	~ 80%	$3.5 \times 10^7$	733
Male gamete	Whole cell	~ 98%	$1.00 \times 10^8$	476
Ookinete	Whole cell	95–97%	$3.5 \times 10^7$	1091
	'Surface'	95%	~ $5 \times 10^8$	518
	'Microneme'	97%	~ $2.5 \times 10^9$	345
Oocyst	Infected mosquito guts	V. low	1000 guts	277
Sporozoite	Sal glands	V. low	1000 glands	134

(Pbs21/Pbs28) we had noted that whilst the encoding gene was transcribed in the gametocyte, the protein was only expressed many days later in the macrogamete-ookinete (Paton *et al.* 1993), thus we were aware that the concept of 'just in time' gene transcription/translation (Bozdech *et al.* 2003; Olszewski *et al.* 2010) was by no means universal. In attempting to unravel the architecture of the parasite at the molecular level we remain acutely aware that merely describing the presence of proteins does not imply functional activity. In this context we are reminded of the numerous post-translational modifications that may precede biological activation of any protein complex (Foth *et al.* 2011; Treeck *et al.* 2011).

We make no attempt to review the wider literature on malaria proteomics, for this see (Carucci *et al.* 2002; Kooij *et al.* 2006), but rather provide a distillation of our personal experiences in generating the 8 separate proteomic studies on the rodent malaria parasite *Plasmodium berghei* in the mosquito vector (Hall *et al.* 2005; Stanway, 2007; Lal *et al.* 2009; Talman, 2010). This focus in no way detracts from the numerous penetrating analyses of the bloodstage parasites and notably of the merozoite (Sam-Yellowe *et al.* 1998, 2004; Florens *et al.* 2002; Silvestrini *et al.* 2005), and the heroic efforts to describe the pre-erythrocytic parasite (Carucci *et al.* 2002; Doolan *et al.* 2003; Wang *et al.* 2004; Blair and Carucci, 2005).

The composition of the life stages, and the cell fractions we have studied are listed in Table 1. The purpose of the studies were: a comparative analysis of the molecular composition of life stages with similar cell strategies, and the appreciation of the scale of translation control in the macrogametocyte (Hall *et al.* 2005); the identity and molecular capacities of the ookinete secretory organelles (Lal *et al.* 2009), and ookinete cell surface (Stanway, 2007). The latest study, on the microgamete proteome (Talman, 2010), was motivated by the fact this is the simplest eukaryotic cell known to us, possessing 'just' a repressed/condensed nucleus, an axoneme and a plasma membrane, thus offering an exciting opportunity to attempt an *in silico* approach to the understanding of its cell structures and functions.

Whilst highlighting some of the successes of these studies we also describe some of the numerous 'confounding factors' that compromised the generation and analysis of the data in the hope that this may help others contemplating similar approaches. In particular we have attempted to refine and strengthen some of the bioinformatic approaches to the analysis of large proteome datasets, the methods for which are outlined here.

#### MATERIALS AND METHODS

##### *Parasite preparation*

*Parasite.* The parasites used for these studies were *Plasmodium berghei* clone 2.34 (wild-type), and clone 2.33 a line that fails to produce mature gametocytes (used for the preparation of mixed asexual blood-stages). Additionally knockout sub-clones of 2.34 in which either one or both of the genes encoding the dominant surface antigens Pb28 (clone b28sko), Pb25 (clone b25sko), Pb25&28 (clone b25/28dko) had been deleted were used to study methods for cell surface biotinylation.

Parasites were either stored over liquid nitrogen or maintained in Tucks Original mice by mechanical passage, and transmitted through mosquitoes every 8<sup>th</sup> blood transfer. All details of the preparation of the separate life stages, and of microneme fractions are as described previously (Hall *et al.* 2005; Lal *et al.* 2009).

##### *Labelling ookinete surface proteins*

*Biotinylation.* Ookinetes were purified from mature cultures (Lal *et al.* 2009) by binding to anti-P28 monoclonal antibody-coated magnetic beads. Ookinetes were washed in PBS at pH 8.0 and incubated with EZ-Link<sup>®</sup> Sulfo-NHS-LC-Biotin (Pierce, UK) for 30 minutes. The biotinylation reaction was stopped by incubation with 50 mM NH<sub>4</sub>Cl. Ookinetes were washed in 50 mM Tris-HCl, pH 7.4 and were then lysed by passing through a 25 gauge needle in buffer containing 7 M Urea, 2 mM DTT, 0.1% SDS and Complete Mini Protease

Inhibitor Cocktail (Roche Applied Science). The lysate was centrifuged at 15 000 r.c.f. for 30 minutes at 4 °C and the supernatant was diluted 20-fold with PBS, pH 8.2, prior to incubation in binding buffer with streptavidin Sepharose<sup>®</sup> high performance beads (Amersham Biosciences, UK), prepared according to the manufacturer's instructions. The beads were washed in 0.1% SDS, 50 mM Tris, pH 8.0, followed by 50 mM Tris, pH 8.0 and incubated for 25 minutes in 8 M urea and 100 mM trisphosphine hydrochloride (TCEP) to denature and reduce proteins, respectively. Beads were incubated in 500 mM iodoacetamide for 25 minutes and then 1 µg sequencing grade endoproteinase Lys-C (Roche Applied Science) added for 6 hours at 37 °C, followed by 1 µg sequencing grade modified trypsin (Promega) in 50 mM Tris, pH 8.0 overnight. The supernatant was removed, formic acid added to a concentration of 5 mM and the sample lyophilised.

**Iodination.** Ookinetes purified as above were surface iodinated using IODO-BEADS<sup>®</sup> Iodination Reagent (Pierce) and Iodine<sup>125</sup> (NaI in 0.01 N NaOH, pH 8–11, 100 mCi, MP Biomedicals). 500 µCi NaI<sup>125</sup> were incubated with 20 IODO-BEADS<sup>®</sup> and the purified ookinetes for 15 minutes. The beads were removed and the ookinetes washed in RPMI. Total ookinete proteins were subjected to SDS-PAGE and autoradiography to profile the molecular motilities of iodinated proteins. Iodine<sup>125</sup> labelled samples were analysed by 1-D SDS gel chromatography and selected labelled bands identified by western blotting with available monoclonal antibodies.

**CyDye labelling.** Affinity-purified ookinetes were incubated in Hank's balanced salt solution (HBSS) containing 1 M urea and either Cy3 CyDye<sup>™</sup> or Cy5 CyDye<sup>™</sup> (GE Healthcare) on ice for 20 minutes. The labelling reactions were quenched on ice for 10 minutes with 10 mM lysine. Cells were washed in HBSS and subjected to two-dimensional gel electrophoresis. Isoelectric focussing on Immobiline Dry Strips<sup>™</sup>, pH 3–10, 11 cm (Amersham Biosciences) was followed by SDS-PAGE gel electrophoresis in 4–12% Criterion<sup>™</sup> XT precast gradient gels (Biorad Laboratories). Gels were stained with 80% Brilliant blue G-colloidal concentrate (Sigma) and de-stained with 1:1 7% acetic acid: 25% methanol, followed by 25% methanol.

### Proteomics

MudPIT analysis of all samples has been described in detail previously (Hall *et al.* 2005; Lal *et al.* 2009; Talman, 2010). CyDye labelled samples of ookinete surface proteins were separated by 2-D gel chromatography and the labelled spots excised and analysed

by Q-TOF mass spectrometry by Dr. R. Wait of the Kennedy Institute of Rheumatology, London.

**Spectral Analyses.** All the data reported here with the exception of the microgamete proteomes were derived from filtered spectra prepared using SEQUEST (version 27) and the *P. berghei* genome annotation then available (Hall *et al.* 2005) derived from the 3x coverage sequence of the genome. This primary analysis was complemented by use of the 8x *P. yoelii* library (Carlton *et al.* 2002). The NCBI common contaminant, mouse and mosquito databases and a reverse database (Peng *et al.* 2003) were used to remove contaminating and false spectra. Results were assembled and filtered using DTASelect (version 2). Where possible we made 10 runs on each preparation in an attempt to achieve 95% coverage of the complex mixtures being studied.

### Bioinformatic analysis methods

All samples, with the exception of the microgamete proteomes, were analysed manually as described previously (Hall *et al.* 2005; Lal *et al.* 2009).

**Automated prediction of subcellular localisation of microgamete proteins.** Recognising the relatively restricted number of cell locations and cell functions of the microgamete we surmised this might permit additional automated and parallel *in silico* approaches to data analysis. To predict subcellular localisation for the gamete protein, initially tmHMM (Krogh *et al.* 2001) and SCAMPI (Bernsel *et al.* 2008) were used to identify transmembrane proteins. Where there was no agreement TOPCONS (Bernsel *et al.* 2009) was used to provide a consensus transmembrane prediction. SignalP (Emanuelsson *et al.* 2007) was used to predict signal peptides, and multiple predictors were used for subcellular localisation: WOLF PSORT (Horton *et al.* 2007), Sherloc2 (Briesemeister *et al.* 2009), ESLPred2 (Garg and Raghava, 2008), Euk-mPLoc (Chou and Shen, 2007) and Cello (Yu *et al.* 2006). Their predictions were combined to give consensus analyses. Additionally the keywords identified from Interpro (Hunter *et al.* 2009) hits for the sequences were used to infer localisation. As examples histone, DNA, HMG (high mobility group) and nucleosome infer nuclear location, and in the case of the microgamete actin, kinesin and tubulin infer axonemal/flagellar location. The locations inferred are based on the knowledge from electron microscopy of the limited subcellular locations present in the gamete and clearly will not necessarily hold true for other complex cell types.

**Automated prediction of protein function.** Protein function was predicted using multiple prediction

methods. Interpro (Mulder *et al.* 2007) domain hits were mapped to Gene Ontology (GO) (Ashburner *et al.* 2000) functions using the Interpro-to-GO mapping provided by Interpro. Additionally the Pfam domain combinations were used to predict GO functions (Forslund and Sonnhammer, 2008). GO functions were also predicted using ConFunc (Wass and Sternberg, 2008), PFP (Hawkins *et al.* 2006) and FFPred (Lobley *et al.* 2008). The fold library of the protein structure prediction server Phyre2 (Kelley and Sternberg, 2009) was searched and the functional annotations of the hits in the Enzyme Classification (Bairoch, 1999) and GO were identified. 3DLigandSite (Wass *et al.* 2010) was used to predict small molecule ligand binding sites.

#### *Manual prediction of location and protein function.*

Final predictions of both subcellular localization and protein function were made manually by analysing the results of the automated methods and by making further reference to the literature and to additional information available e.g. PlasmoDB/EuPath. This included the subcellular locations for proteins that are present in apiloc (<http://apiloc.bio21.unimelb.edu.au/apiloc/apiloc>), which contains subcellular locations extracted from literature. Our manual predictions of both function and subcellular localization are associated with descriptions of the data used to make the prediction. All results are available at <http://www.sbg.bio.ic.ac.uk/~mwass/plasmodium>.

## RESULTS AND DISCUSSION

Recognising the specific objectives of this symposium, the results and discussion presented here will focus on the methodological issues specifically relating to *Plasmodium*. Thus we specifically exclude discussion on the relative merits of the proteomic methods used e.g. MudPIT vs. gel-LC/MS/MS a robust debate presented elsewhere (Lasonder *et al.* 2002).

#### *Life cycle stages*

*Asexual blood stages.* In 2005 we published a comparative proteome of the life stages of *P. berghei* in which a 'reference' preparation of asexual blood stages was derived from mice infected with a gametocyte-less clone 2:33 (Hall *et al.* 2005). We now have reason to doubt the original phenotypic characterization of this clone. Briefly; for some 20 years we had observed clone 2:33 and never found any evidence for the presence of mature gametocytes in the blood of infected mice by light or electron microscopy, nor by molecular analysis of late stage gene products (e.g. mRNA of P28). Whilst recognising the identical morphologies and similar metabolic profiles of the immature gametocytes

and the asexual trophozoite, it was not until the publication of Deligianni *et al.* (2011) that evidence emerged that clone 2:33 may form immature gametocytes (which then fail to develop). Thus the proteome for the asexual blood stages reported by us (Hall *et al.* 2005), must now carry the caveat 'the asexual, and immature sexual blood stages'! For us this is a lesson well learnt, and in retrospect represents a 'Rumsfeldian' unknown-unknown.

The calculated 81% coverage of the genome achieved in the proteomic analysis of the *P. berghei* life cycle (Hall *et al.* 2005), permitted interesting global comparisons to be made between the different life strategies (invasion, replication and sex) and stages (e.g. within the invasion strategy – merozoite; sporozoite; ookinete). Parasite stages within a 'strategy' were found to share a greater proportion of proteins than are committed to the unique activities distinguishing individual stages (see Fig. 1). Lasonder *et al.* (2008) similarly found stage-specific protein expression to represent just ~12 to ~28% of all proteins expressed by that stage. An unexpected finding was that the male gamete, despite being entirely derived from the microgametocyte in a process lasting just 15 minutes, nonetheless 34% of the proteins found in the gamete have not yet been described in the proteome of the un-activated gametocyte. These proteins are therefore either synthesised *de novo* during the process of exflagellation, or they represent a group of molecules 'lost' from the gametocyte proteome for technical reasons (low abundance or recovery).

Where significant proteomes exist for any life stage, we have often found the apparent absence/presence of individual proteins to be in error. Conversely, we have found the presence or absence of functionally related groups of proteins in replicate experiments a compelling entrée to understand their biology. Thus, in the case of the ookinete, in which both micronemes and rhoptries had been identified by electron microscopy (Sinden, 1978), the absence of the known rhoptry proteins paralleled by the presence of a large and broadly representative group of known microneme proteins prompted our conclusion that the ookinete lacked rhoptries (Lal *et al.* 2009). The ability to test this hypothesis using protein tagging studies (Tufet-Bayona *et al.* 2009) validated this hypothesis. This re-analysis then provided a rational molecular understanding for the contrasting biological observations that midgut epithelial cells invaded by ookinetes are lysed and die, expressing vATPase (Shahabuddin and Pimenta, 1998; Cociancich *et al.* 1999; Han and Barillas-Mury, 2002) whereas host cell invasion by merozoites and sporozoites (both of which possess rhoptries) permits their respective host cells to survive invasion and support subsequent vegetative growth of the parasite.

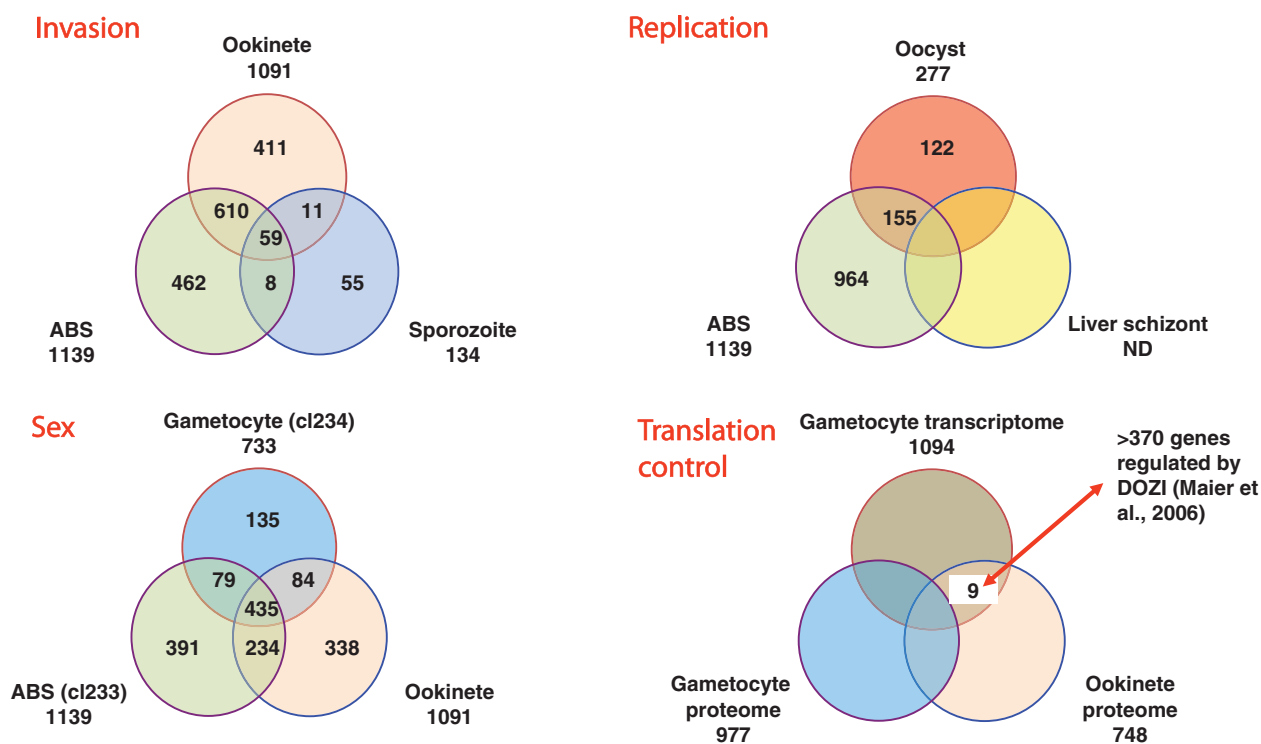


Fig. 1. Venn diagrams to illustrate the distribution of proteins detected in individual life stages that found uniquely in one life stage, or shared between stages within strategy classes (invasion, replication and sex). Proteins subject to translation control were identified as those found uniquely as mRNA in the gametocyte but as protein in the ookinete. (Modified from Hall *et al.* 2005)

Sporozoites which transit multiple host cells prior to beginning vegetative growth in the liver may therefore be hypothesised to employ phased/regulated secretion of the micronemes (traversal and residency) and rhoptries (residency).

A second example of the utility of observations on molecular groups has been the integration of transcriptomic and proteomic data to understand protein expression in the mature female gametocyte. The identification of 9 proteins in the ookinete that were present as transcripts but not proteins in the mature female gametocyte (Hall *et al.* 2005), combined with the knowledge that for one of these proteins (P28/Pbs21) convincing data existed for the presence in the macrogametocyte of the message in discrete cytoplasmic structures (Thompson and Sinden, 1994) provided provocative evidence for the wider use of translational control mechanisms in *Plasmodium* biology (Fig. 1). Subsequent elegant molecular dissection of this concept followed, leading to the recognition that as many as 370 proteins may be suppressed at the level of translation in the gametocyte (Mair *et al.* 2006). Noting the similar strategic positions of the gametocyte and the sporozoite in the parasite life cycle – both are terminally differentiated cells that must survive extended periods in one host before having to respond rapidly to the environment of the new host following transmission – it is interesting to note translational control mechanisms are employed by both (Gomes-Santos *et al.* 2011). It

would be fascinating to understand whether similar mechanisms also regulate the remaining ‘latent’ stage, the hypnozoite.

*The microgamete.* One of the most recent, and currently unpublished, proteomes we have produced is from the intact microgamete. Our reasons for undertaking the challenge of preparing this very rare and physically small stage of the life cycle are manifold. First, it occupies a critical point in the parasite life cycle and one that has become the focus of much attention since the recognition of the key roles of gametogenesis, fertilisation and ookinete development in the development of new and powerful transmission-blocking intervention strategies (Wells *et al.* 2009). Second, the preparation of the parasite material required no subcellular fractionation steps that might change the protein composition of the preparation. Third, our previous electron microscopic studies (Sinden *et al.* 1976; 1978, Sinden, 1983), supported by later genetic analyses (Creasey *et al.* 1993; Okamoto *et al.* 2008) suggested the microgamete has essentially just 4 cellular compartments: a nucleus in which lies a condensed genome; an axoneme; cytoplasm and cell membrane. This we anticipated might offer a simplified dataset for the development of improved methods for the bioinformatic analysis of data (and its validation by genetic manipulation techniques) as described below. The publication of these data has

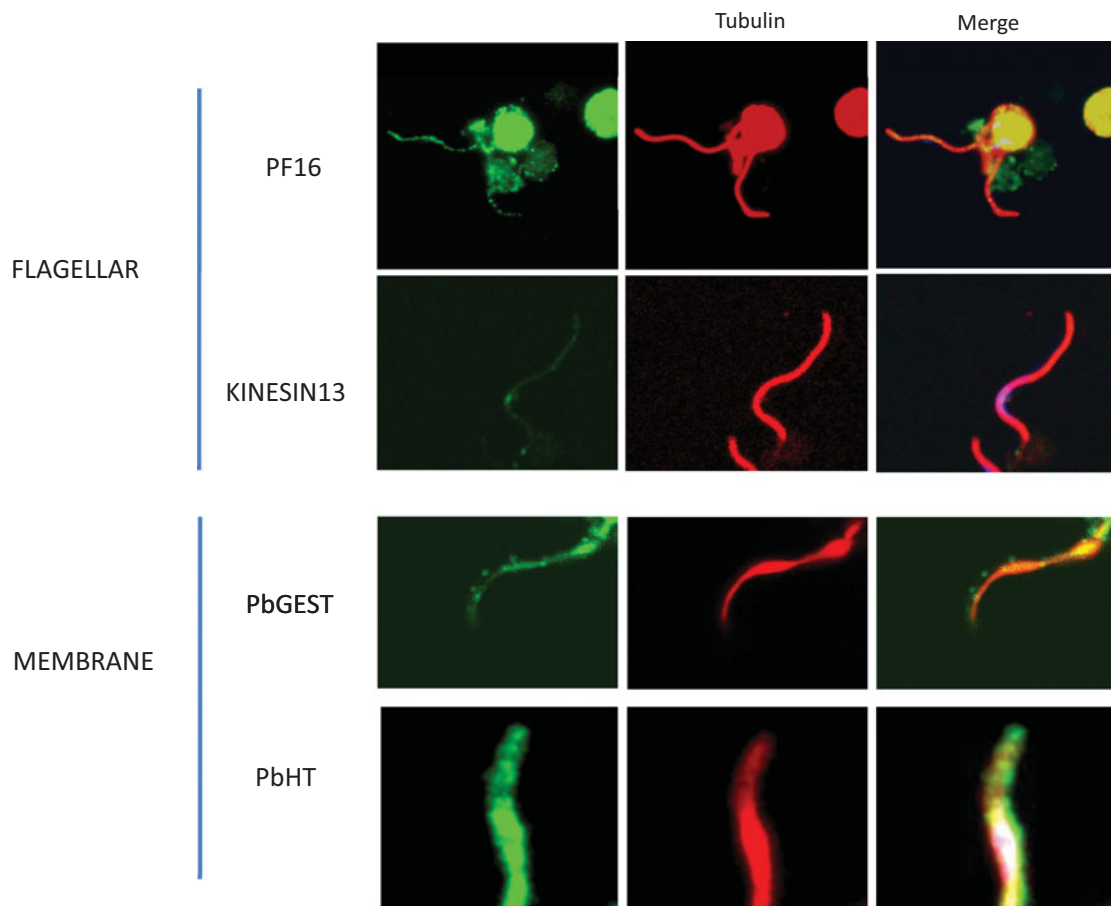


Fig. 2. All proteome-predicted male gamete proteins we have attempted to localize thus far have been found *in situ* in the male gamete: PF16 (Straschil *et al.* 2010), Kinesin13 (Marques, unpublished), PbGEST (Talman *et al.* 2011) and PbHT (Slavic *et al.* 2011).

been delayed by the ‘inconvenient’ publication of a revised *P. berghei* genome, which required a complete re-analysis of all the spectra against the new gene models, a substantial exercise that changed 152 of 624 protein identifications!

Recognising prior conclusive evidence that the microgamete lacked a mitochondrion, it was surprising that despite strong evidence that the microgamete preparations lacked significant cellular contamination, the proteome contained a few mitochondrial proteins (see below). Whilst it has been long established that microgamete motility is dependent upon extracellular glucose (Nijout and Carter, 1978), nonetheless the abundance of all 11 enzymes of the glycolytic pathway, and the hexose transporter (PbHT) in the proteome was surprising, as was our corresponding failure to detect a putative lactate transporter (Martin *et al.* 2009). The presence/activity of a lactate transporter may be a key regulator of both the fast/slow flagellar activity and the brief (~ 40 min.) life of the gamete. Validation of the importance of glycolysis was achieved in two ways first by location of a C-terminus myc-tagged PbHT to the gamete surface (see Fig. 2), and second by demonstrating the impact of inhibitors of glycolysis upon motility. The outstanding question still to be

resolved is to ask whether/how lactate is removed from the cell?

Whilst the axoneme is the most prominent structure in the microgamete, cytoskeletal (axoneme-related) proteins represented just 6% of all proteins identified by our techniques. Downstream analysis of location and ‘functions’ of those identified has nonetheless proved a fertile area of study (see Fig. 2) that will have an important role to play in unravelling the molecular organisation of the spectacularly rapid process of exflagellation, notably in the spatial organisation of the nucleating centromeres/basal bodies (Straschil *et al.* 2010; Marques, unpublished data) and the intracellular assembly of the 8 axonemes (Sinden *et al.* 2010).

Perhaps the most important contribution of the microgamete proteome in the longer term may be the identification of 23 putative surface molecules, each of which must now be pursued to question their roles in fertilization and their potential for development as targets for transmission-blocking antibodies. Amongst these proteins were some that prior evidence has suggested very strongly to be synthesised exclusively in the female gamete cell lineage e.g. the LAP/CCCP proteins and p47 (Khan *et al.* 2005; van Schaijk *et al.* 2006; Scholz *et al.* 2007).

Recognising that we were unable to detect any female gametes in the originating cell preparation we are led to question the mechanism explaining their presence in the proteome. Amongst many others, one interesting possibility we are pursuing, surmises that these female proteins may specifically bind to the male extracellular surface (should they be released into the medium). Thus these female 'contaminants' have become priority candidates in our search for additional fertilisation ligands.

#### *Analysis of cell fractions*

When embarking on the proteomic dissection of cell fractions we had hoped that the anticipated enrichment of proteins would unambiguously identify molecules with key roles in the activity of that sample. It is perhaps this hope that has been most profoundly dented. Whereas the cellular composition of whole cell preparations of life cycle stages may be considered relatively undemanding (but certainly not infallible), the composition and origins of components in cell fractions has posed insurmountable hurdles for these applications.

*The ookinete surface.* Three broad methodologies exist for the generation of surface proteomes. One of the most commonly used techniques has been the combination of cell lysis and differential centrifugation and/or sucrose gradient flotation to purify the plasma membrane. Whilst fractionation has proved successful for proteomic analysis of *Plasmodium* rhoptries and of the micronemes of *P. berghei* ookinetes (see below), we anticipated that the close association of the plasma membrane and underlying inner membrane complex would be likely to lead to co-purification of this entire alveolar structure, the subsequent rigorous detergent lysis required to disrupt this complex could dissociate some surface-exposed proteins. Trypsin 'shaving', a method successfully employed to analyse the merozoite/RBC interactions (Hadley and Miller, 1988), was discounted because the ookinete naturally lives in an environment rich in this enzyme (Gass, 1977; Gass and Yeates, 1979; Muller *et al.* 1993). We therefore chose to label and then affinity-purify surface-exposed proteins from cultured, purified, intact ookinetes. Preliminary comparative analysis of WT, P28ko, P25ko and P25/P28 double ko ookinetes showed these key ookinete surface proteins could be labelled readily with sulfo-NHS-LC-biotin. Biotinylation identified 518 proteins, of which 67 were predicted to harbour a signal peptide and/or transmembrane domain. Of the 16 known ookinete surface proteins, 15 were identified in the dataset. To compare the data with the whole ookinete proteome (Hall *et al.* 2005), the Relative Spectral Abundance (RSA) was calculated for each of the 320 proteins

detected in both the surface and whole ookinete proteomes. The proportion represented by each protein of all spectra in either dataset was calculated, giving two spectral proportion values  $SP_{\text{surface}}$  and  $SP_{\text{whole}}$ . When  $(SP_{\text{surface}} - SP_{\text{whole}}) > 1$  proteins were considered to be enriched in the surface proteome. Of the 50 proteins most enriched in the surface proteome (Table 2), six are known to be surface associated or secreted (P28, P25, CTRP, LAP1, LAP2 and chitinase). Whilst the ookinete surface may still hold some surprises, as recently suggested by the descriptions of enolase and actin on the ookinete plasma membrane (Hernandez-Romano *et al.* 2011), many of these 'enriched proteins' are highly unlikely to be found naturally on the ookinete surface e.g. histones H2A and H2B (previously surface located (Watson *et al.* 1995)), dynein and ATP-dependent RNA helicase. Amongst those proteins with an RSA  $< 1$ , i.e. depleted, were some such as von Willibrand factor A domain Related Protein (WARP), previously found on the ookinete surface. In trying to understand this 'depletion', we are reminded that the methodology does not report the final /functional location of a protein, but rather reports the fraction of that protein that is resident in a sample at the time of labelling, thus proteins whose trafficking to the surface is highly regulated (i.e. a high proportion of the total is in cytoplasmic vesicles) might appear to be surface depleted by this analysis.

We were challenged by the presence of so many intracellular proteins in these 'surface' fractions. We noted many of the proteins belonged to the actin-myosin motor complex, which is known to be located immediately beneath the plasma membrane and associated with the inner membrane complex (see Fig. 3). In retrospect we then examined, during the surface biotinylation procedure, the permeability of ookinetes by exposing them to propidium iodide – which reportedly only enters cells whose plasma membrane is compromised. Following affinity purification; washing in PBS pH 8.0; and biotinylation, we saw 6%; 21%; and 75% respectively of the ookinetes were permeant to the dye. It was then unsurprising that we had biotinylated intracellular proteins. We nonetheless recognise other factors may also contribute to cytoplasmic contamination of these proteomes e.g. failure to quench the biotinylation reagent following labelling, and non-specific binding of proteins to streptavidin.

We attempted to validate the biotinylated surface proteome by both surface iodination and CyDye technologies. Surface iodination, followed by SDS-PAGE and autoradiography suggested the ookinete surface is dominated by two proteins, identified as P25 and P28 in Western blots. CyDye methods similarly identified both P25 and P28, but additionally labelled actin and protein disulphide isomerase (PDI). PDI has been described on the surface of

Table 2. The 50 proteins detected with the most spectra in the ookinete surface proteome. Proteins shown in **Bold** are those known to be on the ookinete surface and those in *italics* have a predicted surface localisation.

Gene ID	Name	Spectra
<b>PB000233.00.0</b>	<b>CSP- and TRAP-related protein (CTRP)</b>	<b>274</b>
PB000609.00.0	Hypothetical protein	271
PB000857.00.0	Tubulin alpha chain, putative	264
PB001069.00.0	Myosin a (MyoA), putative	262
<i>PB001298.00.0</i>	<i>Disulfide isomerase precursor, putative</i>	<i>258</i>
<b>PB000865.00.0</b>	<b>28 kDa ookinete surface antigen, P28</b>	<b>248</b>
PB300144.00.0	Histone h2a, putative	177
PB000164.02.0	Tubulin beta chain, putative	149
PB000603.01.0	ATP-dependent RNA helicase, putative	143
PB300720.00.0	Hypothetical protein	142
<i>PB001177.00.0</i>	<i>Heat shock protein, putative</i>	<i>138</i>
<i>PB000053.00.0</i>	<i>Endoplasmic reticulum chaperone precursor, putative</i>	<i>132</i>
PB000323.01.0	Actin	130
PB001519.02.0	Hypothetical protein	108
PB000423.03.0	Elongation factor 1 alpha, putative	97
PB001022.02.0	FAD-dependent glycerol-3-phosphate dehydrogenase, putative	97
<b>PB000266.01.0</b>	<b>25 kDa ookinete surface antigen, P25</b>	<b>85</b>
<i>PB000652.01.0</i>	<i>LCCL/Lectin Adhesive-like Protein 2, PbLAP2</i>	<i>84</i>
PB000456.03.0	Enolase, putative	81
PB300531.00.0	Hypothetical protein	73
PB001096.02.0	Histone H2A variant, putative	72
<i>PB000131.02.0</i>	<i>Small heat shock protein</i>	<i>68</i>
PB001040.00.0	Conserved hypothetical protein	66
<i>PB000418.03.0</i>	<i>PDI-like protein, putative</i>	<i>65</i>
<i>PB001032.02.0</i>	<i>Chitinase (CHT1)</i>	<i>64</i>
PB000484.02.0	Hypothetical protein	62
PB000180.03.0	40S ribosomal protein S7 homologue, putative	61
<i>PB000817.02.0</i>	<i>Heat shock 70 kDa protein, putative</i>	<i>59</i>
PB001286.00.0	Polyadenylate-binding protein, putative	54
PB000860.02.0	Dihydroliipoamide succinyltransferase, putative	53
<i>PB000977.02.0</i>	<i>LCCL/Lectin Adhesive-like Protein 1, PbLAP1 (PbSR, PbSLAP)</i>	<i>52</i>
PB000768.03.0	Conserved hypothetical protein	51
PB300665.00.0	Acid phosphatase, putative (GAP50)	51
<i>PB000330.03.0</i>	<i>Protein disulfide isomerase related protein, putative</i>	<i>47</i>
PB001526.02.0	Transmission blocking target antigen precursor, Pbs47	47
PB301381.00.0	Hypothetical protein	44
PB000120.01.0	Conserved hypothetical protein	43
PB001664.02.0	Organelle processing peptidase, putative	42

Table 2. (Cont.)

Gene ID	Name	Spectra
<i>PB000879.01.0</i>	<i>Hsp60, putative</i>	<i>42</i>
PB301219.00.0	Hypothetical protein	41
PB300751.00.0	Hypothetical protein	41
PB001125.00.0	Conserved hypothetical protein	41
PB000198.00.0	Conserved hypothetical protein	41
PB000990.01.0	Mitochondrial processing peptidase alpha subunit, putative	40
PB000126.03.0	RNA helicase-1, putative	40
<i>PB001334.02.0</i>	<i>Secreted ookinete adhesive protein (SOAP)</i>	<i>38</i>
PB000523.01.0	60S Acidic ribosomal protein P2, putative	35
PB000298.03.0	Plasmeprin IV, putative	35
PB000824.03.0	Conserved hypothetical protein	35
PB000600.00.0	Calmodulin-domain protein kinase 4 (CDPK4)	34

*Toxoplasma gondii* tachyzoites (Meek *et al.* 2002) and in *Neospora caninum* has been shown to localise to the micronemes and to be involved in interaction with the host cell (Naguleswaran *et al.* 2005).

*A microneme proteome.* Micronemes, together with rhoptries and mononemes, are regulated secretory vesicles that may be found at the anterior of the invasive stages of apicomplexan parasites (Singh *et al.* 2007). Proteins secreted from these organelles have roles in motility and host cell invasion. The physical composition of our microneme preparations from the ookinete was compelling; the initial ookinete preparation was 97% pure, analysis of the density gradients by Western blotting revealed significant enrichment of known micronemal proteins in fractions of the anticipated density (1.1 g/ml). EM observations confirmed the abundance of micronemes but clearly identified other unspecified cell debris (Lal *et al.* 2009). This enrichment was paralleled by the simultaneous depletion of known surface proteins and proteins predicted to locate at the ER, mitochondria, apicoplast and nucleus. We had anticipated that by determining the RSA, we would uniquely identify micronemal proteins. Micronemal proteins were amongst the most abundant in these fractions and the most enriched (1.6% of whole ookinete vs. 18.3% of fraction spectra), but other protein classes were also enriched e.g. ribosomal proteins (8.4% of whole ookinete vs. 9.7% of fraction spectra), suggesting in this instance RSA may be less informative. The abundance of micronemal proteins ranged from 1094 spectra (SOAP) to 4 (PPLP4), but some proteins previously reported in this organelle were not found (e.g. Sub-2, PPLP3) (Table 3).



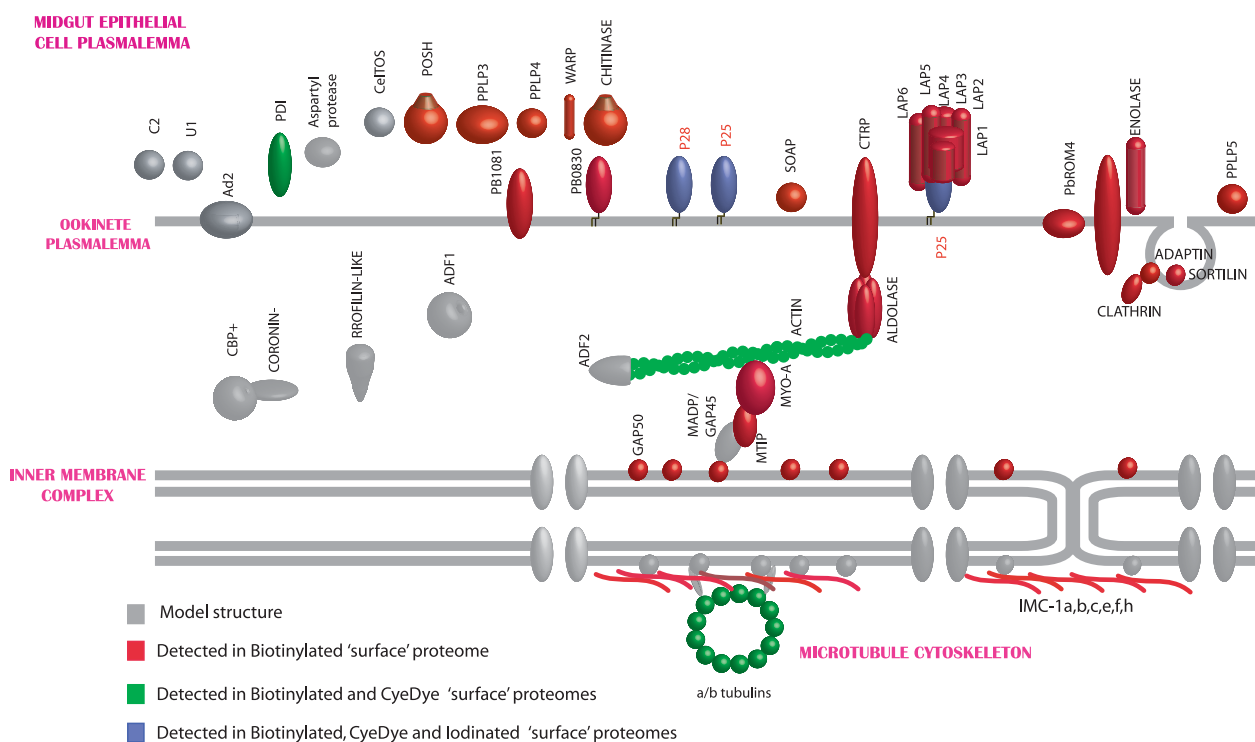


Fig. 3. Diagrammatic representation of molecules detected in the putative surface proteomes of the ookinete, noting how different labelling methods identified proteins from different reported locations. (R.Stanway, 2009)

Quantitative proteomic methods have been examined in detail by others (Nirmalan *et al.* 2004; Sims and Hyde, 2006; Foth *et al.* 2011; Southworth *et al.* 2011). It has been argued that spectral count correlates with protein abundance, but without knowing the individual behaviours of proteins during the preparative steps, we must be cautious in extrapolating these values to the originating cell. Nonetheless, for our purposes the most highly abundant proteins are certainly worthy of attention, thus the high position of PDI in the microneme proteome suggests this chaperone is carried through into the mature secretory vesicle from its presumed initial interaction with cargo proteins in the lumen of the endoplasmic reticulum. Recalling that PDI was also present in the surface proteome we suggest it may be carried from the ER through the micronemes to the parasite surface. Others have suggested extracellular roles for PDI e.g. manipulating glycoprotein interactions (Bi *et al.* 2011) and *Chlamydia* cell invasion (Abromatis and Stephens, 2009). Whilst the greatest attention has been placed on the identification of protein cargo of the micronemes, it was not unexpected that this enriched vesicle preparation contained many cytoplasmic proteins known to mediate the trafficking of secretory vesicles between the Golgi apparatus and the cell surface. Amongst these, the relative abundance of actin (39 spectra) is entirely consistent with the interesting observation of high concentrations of GFP-tagged actin at the anterior pole of the ookinete where the

micronemes ducts fuse with the plasma membrane (Vontas *et al.* 2005).

#### Extended bioinformatics analysis

As stated in the introduction, the prime reason for undertaking proteomic analyses of *Plasmodium* has been to extend our understanding of parasite biology from the level of the organelle to that of their component molecular machines. The high fraction of hypothetical proteins even in the latest annotations of the malarial genomes constantly frustrates this ambition. Recognising the small size of the parasite genome and potential for 'hybrid' protein functions we have attempted to bring the power of combined bioinformatic approaches to generate possible functions for these 'hypothetical' proteins that can be tested in the laboratory. We have tested this approach using the microgamete proteome for the reasons stated above.

While standard bioinformatics techniques, such as BLAST (Altschul *et al.* 1990), were able to identify some of the main features of the microgamete, there remained many sequences (182 of 624) with hypothetical or unknown function in PlasmoDB as of December 2010. Additionally many proteins have names but little is known of their function (e.g. early transcribed membrane proteins and BIR proteins) or they have putative functional annotations. The primary aim of our analysis was to identify essential and testable

Table 3. Proteins with known or putative functions detected in the microneme proteome are shown with the associated number of spectra. Cargo proteins are released from micronemes into the extracellular space with a potential role in invasion. Microneme proteins not detected in this proteome are shown in italics. Vesicle trafficking proteins that may be important to microneme biogenesis, trafficking and secretion are shown. Proteins possibly linked with microneme delivery are termed 'motility' proteins.

Cargo proteins		Vesicle trafficking proteins		Motility proteins	
Name	Spectra	Name	Spectra	Name	Spectra
SOAP	1094	Rab11a	7	Actin	39
PDI	438	VAMP	7	Aldolase	24
PSOP2	434	Dynamin	6	Myosin A	20
Chitinase	196	Clathrin	5	MTIP	7
CTRP	168	Sortilin	4	ADF	5
POSH	99	Syn13	2		
WARP	43	NSF	2		
CeTOS	29				
AM-1	29				
PPLP4	4				
<i>Sub-2</i>	0				
<i>PPLP3/MAOP</i>	0				

Table 4. Predicted subcellular localisation of *Plasmodium berghei* microgamete proteome. The number of proteins predicted to be present in each category is shown for whole proteome and also for those proteins that are unannotated.

Location	Gamete	Unannotated proteins
Cytoplasmic	189	8
Nuclear	69	27
Plasma Membrane (PM)	55	25
/Nuclear membrane		
Cytoplasmic/Nuclear	64	15
PM/Extracellular	41	21
Extracellular	37	19
Flagellar	36	18
PM	32	9
No prediction	31	20
Mitochondrial	29	5
Membrane associated	15	3
Only low confidence prediction	12	10
Cytoplasmic/Nuclear/Extracellular	3	0
Cytoplasmic/Flagellar	3	1
Cytoplasmic/Mitochondria	2	0
Cytoplasmic/Extracellular	1	1
Cytoplasmic/Flagellar/Nuclear	1	0
Cytoplasmic/Membrane	1	0
Cytoplasmic/Nuclear/Mitochondrial	1	0
Cytoplasmic/PM	1	0
Cytoplasmic/PM/Extracellular	1	0

functions or locations for these hypotheticals. Predictions of location can be particularly useful when a function cannot be predicted e.g. a protein located on the microgamete surface may imply a role in fertilization.

We combined multiple state-of-the-art function prediction and subcellular localisation prediction methods to generate consensus predictions (See Materials and Methods). These consensus predictions were finally analysed manually. It is important to emphasise that this analysis was highly predictive and that while we were able to assign potential functions and/or localisation to a majority (607 of 624), 506 now have predictions for both function and localisation in the microgamete, we nonetheless recognise these predictions require experimental verification.

*Location.* Table 4 shows the overall results for subcellular localization prediction. The largest fraction of proteins was predicted to be cytoplasmic (189) or nuclear (69). We were able to assign locations to all but 43 of the microgamete proteins, for 12 of these weak predictions could be made but with unacceptably low confidence, for others multiple locations were predicted. Twenty nine of the microgamete proteins in this extended analysis appear to be mitochondrial, which suggested cellular contamination in the sample (see above).

Using 3 different location criteria (intracellular, transmembrane or extracellular/membrane associated/nuclear envelope) the majority (393) of the proteins are intracellular, 103 are transmembrane and 129 extracellular or membrane associated.

We have predicted subcellular localizations for all but 30 of the currently unannotated proteins. The locations predicted are spread throughout the different regions of the gamete (Table 4). The largest fraction of the proteins is predicted to be transmembrane (34 either in the plasma or nuclear membranes). Of the non-transmembrane proteins 27 are predicted to be localized to the nucleus, which is

Table 5. Predicted functions of the *Plasmodium berghei* microgamete proteome. The predicted functions generated by the bioinformatics analysis of the proteome are displayed. Numbers are shown for the complete proteome and also for currently uncharacterized proteins in the proteome. The Enzyme\* category includes general enzyme functions which not considered highly informative. The Other† category includes functions that are only predicted for a single protein and are not present in the unannotated set of proteins

Function	Gamete	Unannotated proteins	Function	Gamete	Unannotated proteins
Metabolism	93	4	Transcription	4	2
Translation	65	1	HAD hydrolase	3	2
No prediction	55	53	Merozoite surface protein	3	
Transport	51	12	Post translational modification	3	
Chaperone	40	1	Replication	3	
Flagellar	39	18	RNA processes	3	
Low confidence prediction	40	32	Splicing	3	1
Signalling	31	11	CLAG	2	
Protein trafficking	18	2	Exported protein	2	2
tRNA synthetase	15		Ookinete surface protein	2	
Enzyme*	14	4	Plasmepsin	2	
Protease	13	5	Plasmodium antigen	1	1
Chromatin	11	1	Armadillo-like domain	1	1
Degradation	10		Cell adhesion /Flagellar	1	1
DNA binding	9	7	Cleft lip palate related	1	1
DNA/RNA binding	8	3	DNA binding /Flagellar	1	1
Calcium storage/ signalling	6	4	domain: <i>P. yoelii</i> subtelomeric PYST-B	1	1
RNA binding	6	1	Dynamain like protein	1	1
DNA processes	5		FAD/NAD binding	1	1
ETRAMP	5		Flagellar/signalling??	1	1
Phosphatase	5	1	Lipid binding.	1	1
Rhoptry associated	5		Oxidative phosphorylation /RNA editing	1	1
Sexual stage antigen	5		Phage fibre protein	1	1
Ubiquitin related	5	1	Phospholipid rearrangement	1	1
BIR	4		Other†	19	0
Cell division	4	1			

nearly 40% of all the proteins predicted to be present in the nucleus. Many of the uncharacterized proteins are predicted to be either extracellular or associated with the plasma-membrane. Due to their location it is possible that some of the proteins have roles in fertilisation, potentially including recognition of the female gamete.

**Function.** A summary of the function predictions for the microgamete proteins is shown in Table 5. In this summary the proteins have been assigned to one of three different functional types. Those for which we have made the most informative predictions have been assigned to a process (e.g. translation). Where it has not been possible to predict the biological process, it has often been possible to predict a function (e.g. protease or DNA binding). For some proteins just a domain has been identified (e.g. armadillo-like domain), but in these 'extreme' cases we appreciate this may have little relevance to the true protein function.

Function predictions for the unannotated proteins is more challenging than predicting their subcellular localizations and we have predicted functions for 98

of the 182 proteins. The predicted functions are spread throughout many different areas from transport (including transporters), and signalling to processes regulating DNA and RNA. These predictions in combination with the subcellular localization predictions have been used to identify targets for experimental characterization.

**Functions for flagellar proteins.** Here we use the proteins predicted to be part of the flagellum to provide an example of how the predictions were made. Eighteen uncharacterized proteins were predicted to be potential components (see Table 6). Recognising the axoneme is the sole and dominant cytoskeletal structure in the microgamete most proteins predicted to have cytoskeletal roles (e.g. actin binding) are likely to be associated with this structure (especially if they are not expressed in the proteome of other life cycle stages). Predictions were often based on the combination of individually weak results from different methods. The main features used were the presence of domains that are widely present in, though not exclusive to, flagellar proteins (e.g. WD40 and coiled coils). This

Table 6. Unannotated *Plasmodium berghei* proteins predicted to form part of the microgamete flagellum. The features used to make the predictions are displayed. **Structural library hits** – are structures in the Phyre2 structural library to which microgamete proteins show homology. **Coil** and **LC** indicate if the protein is predicted to have coils and low complexity regions respectively. **Predicted GO functions** are those predicted by PFP, ConFunc, FFPRED and the mapping of Interpro hits to GO. In this table the main relevant functions predicted from combining the results are displayed. **LRR** – Leucine rich region

Gene Id	Interpro Domain hits	Structural library hits	Coil	LC	Predicted GO functions
PBANKA_041580	WD40 – multiple	actin interacting protein	–	yes	no consensus
PBANKA_103570	WD40 – multiple	actin interacting protein	–	–	Actin/cytoskeleton binding
PBANKA_122900	–	actin regulatory protein	yes	yes	Actin/cytoskeleton binding
PBANKA_112530	–	–	yes	yes	Actin/cytoskeleton/actin filament binding,
PBANKA_094240	WD40 – multiple.	actin interacting protein & Apoptotic protease-activating factor 1	–	yes	Tubulin binding
	PTHR22850 – described as having receptor activity (weak)				
PBANKA_145250	PTHR23214 – structural molecule activity.	–	yes	yes	no consensus
PBANKA_111680	–	actin interacting protein (tropomyosin). short hit to bacterial FadA adhesin.	yes	yes	motor activity and actin binding
PBANKA_103860	–	–	yes	yes	motor activity, actin binding
PBANKA_145580	–	LRR and Coiled coil proteins	yes	yes	actin binding (weak)
PBANKA_091450	PANTHER – Hydrophilic surface protein.	short hit to fibrinogen	yes	yes	cytoskeleton binding and actin binding. Motor activity
PBANKA_050970	–	microtubule binding domain & ATPase domain. Also hit to ClpA Chaperone.	–	yes	microtubule motor activity
PBANKA_093930	–	–	yes	yes	cytoskeleton and actin binding
PBANKA_132600	PANTHER – structural constituent of cytoskeleton and actin binding. PFAM – guanylate binding protein	guanylate binding protein and dynamin	yes	yes	no consensus
PBANKA_135880	PFAM hit to kinetochore complex – approx 70 residues	N terminal – to coiled proteins (alpha-tropomyosin, fibrinogen. C-terminal – kinetochore protein	yes	yes	no consensus
PBANKA_083090	PANTHER – structural cytoskeleton domain. LRR (same region)	LRR domains	yes	yes	no consensus
PBANKA_082290	WD40 – multiple	multiple different structures with WD40 domains	–	–	microtubule, dynein, actin binding. Also kinase
	PANTHER – structural constituent of cytoskeleton.				
PBANKA_083300	Profilin – actin binding	Profilin	–	–	cytoskeletal protein and actin binding
PBANKA_094230	Radial spokehead-like protein	–	–	–	no consensus

was often supported by homologies to actin interacting proteins identified by searches of the Phyre2 protein structure library. A further source of evidence was the GO predictions made by both

ConFunc and PFP, many examples predicted functions such as cytoskeleton-binding, actin (or actin-filament) binding, motor activity, microtubule motor activity.

Overall the predictions of flagellar proteins rely heavily on the prediction of a role in the cytoskeleton. While this may be an effective way to predict proteins that may be part of the flagellum, it is also possible that some of these proteins do in fact have functions within the cytoskeleton. This may be more likely for proteins that have predictions that suggest other functions, such as PBANKA\_132600 which also has Interpro domain and structural hits to a guanylate binding protein and PBANKA\_135880 which also has predictions for a kinetochore function (Table 6).

## ACKNOWLEDGEMENTS

The authors acknowledge the financial support of the BBSRC Grant No. BBS/B/03858 (MNW, MJES, KL, FT), Malpartraining programme (AT) ; EUFP7 Biomalpar, Evimalar and Transmalbloc programmes (RES, SM); The MRC (RS), The Wellcome Trust (DR, AE, KL), Fraunhofer CLB, Delaware (AB); NIH P41RR011823 (JY), NIH-NIAID R21 A1072615-01 (HP).

## REFERENCES

- Abromaitis, S. and Stephens, R. S.** (2009). Attachment and entry of *Chlamydia* have distinct requirements for host protein disulfide isomerase. *PLoS Pathogens* **5**(4), e1000357. Epub 2009 Apr 3.
- Altschul, S. F., Gish, W., Miller, W., Myers, E. W. and Lipman, D. J.** (1990). Basic local alignment search tool. *Journal of Molecular Biology* **215**, 403–410.
- Ashburner, M., Ball, C. A., Blake, J. A., Botstein, D., Butler, H., Cherry, J. M., Davis, A. P., Dolinski, K., Dwight, S. S., Eppig, J. T., Harris, M. A., Hill, D. P., Issel-Tarver, L., Kasarskis, A., Lewis, S., Matese, J. C., Richardson, J. E., Ringwald, M., Rubin, G. M. and Sherlock, G.** (2000). Gene ontology, tool for the unification of biology. The Gene Ontology Consortium. *Nature Genetics* **25**, 25–29.
- Bairoch, A.** (1999). The ENZYME data bank in 1999. *Nucleic Acids Research* **27**, 310–311.
- Bernsel, A., Viklund, H., Falk, J., Lindahl, E., von Heijne, G. and Elofsson, A.** (2008). Prediction of membrane-protein topology from first principles. *Proceedings of the National Academy of Sciences, USA* **105**, 7177–7181.
- Bernsel, A., Viklund, H., Hennerdal, A. and Elofsson, A.** (2009). TOPCONS, consensus prediction of membrane protein topology. *Nucleic Acids Research* **37**(Web Server issue), W465–8. doi:10.1093/nar/gkp363
- Bi, S., Hong, P. W., Lee, B. and Baum, L. G.** (2011). Galectin-9 binding to cell surface protein disulfide isomerase regulates the redox environment to enhance T-cell migration and HIV entry. *Proceedings of the National Academy of Sciences, USA* **108**, 10650–10655.
- Blair, P. L. and Carucci, D. J.** (2005). Functional proteome and expression analysis of sporozoites and hepatic stages of malaria development. *Current Topics in Microbiology and Immunology* **295**, 417–438.
- Bozdech, Z., Zhu, J., Joachimiak, M. P., Cohen, F. E., Pulliam, B. and DeRisi, J. L.** (2003). Expression profiling of the schizont and trophozoite stages of *Plasmodium falciparum* with a long-oligonucleotide microarray. *Genome Biology* **4**, R9. Epub 2003 Jan 31.
- Briesemeister, S., Blum, T., Brady, S., Lam, Y., Kohlbacher, O. and Shatkay, H.** (2009). SherLoc2, a high-accuracy hybrid method for predicting subcellular localization of proteins. *Journal of Proteome Research* **8**, 5363–5366.
- Carlton, J. M., Angiuoli, S. V., Suh, B. B., Kooij, T., Pertea, M., Silva, J. C., Ermolaeva, M. D., Allen, J. E., Selengut, J. D., Koo, H. L., Peterson, J. D., Pop, M., Kosack, D. S., Shumway, M. F., Bidwell, S. L., Shallom, S. J., Van Aken, S. E., Riedmuller, S. B., Feldylym, T. V., Cho, J. K., Quackenbush, J., Sedegah, M., Shoalbi, A., Cummings, L. M., Florens, L., Yates, J. R., Raine, D. J., Sinden, R. E., Haris, M. A., Cunningham, D. A., Preiser, P. R., Bergman, L. W., Vaidya, A., Van Lin, L. H., Janse, C. J., Waters, A. P., Smith, H. O., White, O. R., Salzberg, J., Venter, C., Fraser, C. M., Hoffman, S. L., Gardner, M. J. and Carucci, J.** (2002). Genome sequence and comparative analysis of the model rodent malaria parasite *Plasmodium yoelii yoelii*. *Nature* **419**, 512–519.
- Carucci, D. J., Yates, J. R., III and Florens, L.** (2002). Exploring the proteome of *Plasmodium*. *International Journal for Parasitology* **32**, 1539–1542.
- Chou, K.-C., and Shen, H.-B.** (2007). Euk-mPLoc, a fusion classifier for large-scale eukaryotic protein subcellular location prediction by incorporating multiple sites. *Journal of Proteome Research* **6**, 1728–1734.
- Cociancich, S. O., Park, S. S., Fidock, D. A. and Shahabuddin, M.** (1999). Vesicular ATPase-overexpressing cells determine the distribution of malaria parasite oocysts on the midguts of mosquitoes. *Journal of Biological Chemistry* **274**, 12650–12655.
- Creasey, A. M., Ranford Cartwright, L. C., Moore, D. J., Williamson, D. H., Wilson, R. J. M., Walliker, D. and Carter, R.** (1993). Uniparental inheritance of the mitochondrial gene cytochrome-b in *Plasmodium falciparum*. *Current Genetics* **23**, 360–364.
- Deligianni, E., Morgan, R. N., Bertuccini, L., Kooij, T. W., Laforge, A., Nahar, C., Poulakakis, N., Schüller, H., Louis, C., Matuschewski, A. and Siden-Kiamos, I.** (2011). Critical role for a stage-specific actin in male exflagellation of the malaria parasite. *Cellular Microbiology* **13**, 1714–1730.
- Doolan, D. L., Southwood, S., Freilich, D. A., Sidney, J., Graber, N. L., Shatney, L., Bebris, L., Florens, L., Dobano, C., Witney, A. A., Appella, E., Hoffman, S. L., Yates, J. R., Carucci, D. J. and Sette, A.** (2003). Identification of *Plasmodium falciparum* antigens by antigenic analysis of genomic and proteomic data. *Proceedings of the National Academy of Sciences, USA* **100**, 9952–9957.
- Emanuelsson, O., Brunak, S., von Heijne, G. and Nielsen, H.** (2007). Locating proteins in the cell using TargetP, SignalP and related tools. *Nature Protocols* **2**, 953–971.
- Florens, L., Washburn, M. P., Raine, J. D., Anthony, R. M., Grainger, M., Haynes, J. D., Moch, J. K., Muster, N., Sacci, J. B., Tabb, D. L., Witney, A. A., Wolters, D., Wu, Y., Gardner, M. J., Holder, A. A., Sinden, R. E., Yates, J. R. and Carucci, D. J.** (2002). A proteomic view of the *Plasmodium falciparum* life cycle. *Nature* **419**, 520–526.
- Forslund, K., and Sonnhammer, E. L. L.** (2008). Predicting protein function from domain content. *Bioinformatics* **24**, 1681–1687.
- Foth, B. J., Zhang, N., Chaal, B. K., Sze, S. K., Preiser, P. R. and Bozdech, Z.** (2011). Quantitative time-course profiling of parasite and host cell proteins in the human malaria parasite *Plasmodium falciparum*. *Molecular and Cellular Proteomics* **10**, M110.006411. Epub 2011 May 10.
- Garg, A. and Raghava, G.** (2008). ESLpred2, improved method for predicting subcellular localization of eukaryotic proteins. *BMC Bioinformatics* **9**, 503.
- Gass, R. F.** (1977). Influences of blood digestion on the development of *Plasmodium gallinaceum* (Brumpt) in the midgut of *Aedes aegypti* (L.). *Acta Tropica* **34**, 127–140.
- Gass, R. F. and Yeates, R. A.** (1979). *In vitro* damaged of cultured ookinetes of *Plasmodium gallinaceum* by digestive proteinases from susceptible *Aedes aegypti*. *Acta Tropica* **36**, 243–252.
- Gomes-Santos, C. S., Braks, J., Prudencio, M., Carret, C., Gomes, A. R., Pain, A., Feltwell, T., Khan, S., Waters, A., Janse, C., Mair, G. R. and Mota, M. M.** (2011). Transition of *Plasmodium* sporozoites into liver stage-like forms is regulated by the RNA binding protein Pumilio. *PLoS Pathogens* **7**, e1002046. Epub 2011 May 19.
- Hadley, T. J. and Miller, L. H.** (1988). Invasion of erythrocytes by malaria parasites, Erythrocyte ligands and parasite receptors. *Progress in Allergy* **41**, 49–71.
- Hall, N., Karras, M., Raine, J. D., Carlton, J. M., Kooij, T. W. J., Berriman, M., Florens, L., Janssen, C. S., Pain, A., Christophides, G. K., James, K., Rutherford, K., Harris, B., Harris, D. B., Churcher, C., Quail, M. A., Ormond, D., Doggett, J., Trueman, H. E., Mendoza, J., Bidwell, S. L., Rajandream, M.-A., Carucci, D. J., Yates, J. R., Kafatos, F. C., Janse, C. J., Barrell, B., Turner, C. M. R., Waters, A. P. and Sinden, R. E.** (2005). A comprehensive survey of the *Plasmodium* life cycle by genomic, transcriptomic, and proteomic analyses. *Science* **307**, 82–86.
- Han, Y. S. and Barillas-Mury, C.** (2002). Implications of time bomb model of ookinete invasion of midgut cells. *Insect Biochemistry and Molecular Biology* **32**, 1311–1316.
- Hawkins, T., Luban, S. and Kihara, D.** (2006). Enhanced automated function prediction using distantly related sequences and contextual association by PFP. *Protein Science* **15**, 1550–1556.
- Hernandez-Romano, J., Rodriguez, M. H., Pando, V., Torres-Monzom, J. A., Alvarado-Delgado, A., Lecona Valera, A. N., Ramos, R. A., Martinez-Barnetteche, J. and Rodriguez, M. C.** (2011).

- Conserved peptide sequences bind to actin and enolase on the surface of *Plasmodium berghei* ookinetes. *Parasitology* **138**, 1341–1353.
- Horton, P., Park, K.-J., Obayashi, T., Fujita, N., Harada, H., Adams-Collier, C. J. and Nakai, K. (2007). WoLF PSORT, protein localization predictor. *Nucleic Acids Research* **35**, (Web Server issue), W585–587.
- Hunter, S., Apweiler, R., Attwood, T. K., Bairoch, A., Bateman, A., Binns, D., Bork, P., Das, U., Daugherty, L., Duquenne, L., Finn, R. D., Gough, J., Haft, D., Hulo, N., Kahn, D., Kelly, E., Laugraud, A., Letunic, I., Lonsdale, D., Lopez, R., Madera, M., Maslen, J., McAnulla, C., McDowall, J., Mistry, J., Mitchell, A., Mulder, N., Natale, D., Orengo, C., Quinn, A. F., Selengut, J. D., Sigrist, C. J., Thimmma, M., Thomas, P. D., Valentin, F., Wilson, D., Wu, C. H. and Yeats, C. (2009). InterPro, the integrative protein signature database. *Nucleic Acids Research* **37**, D211–D215.
- Kappe, S. H. I., Gardner, M. J., Brown, S. M., Ross, J., Matuszewski, K., Ribeiro, J. M., Adams, J. H., Quackenbush, J., Cho, J., Carucci, D. J., Hoffman, S. L. and Nussenzweig, V. (2001). Exploring the transcriptome of the malaria sporozoite stage. *Proceedings of the National Academy of Sciences, USA* **98**, 9895–9900.
- Kelley, L. A. and Sternberg, M. J. (2009). Protein structure prediction on the Web, a case study using the Phyre server. *Nature Protocols* **4**, 363–371.
- Khan, S. M., Franke-Fayard, B., Mair, G. R., Lasonder, E., Janse, C. J., Mann, M. and Waters, A. P. (2005). Proteome analysis of separated male and female gametocytes reveals novel sex-specific *Plasmodium* biology. *Cell* **121**, 675–687.
- Kooij, T. W. A., Janse, C. J. and Waters, A. P. (2006). *Plasmodium* post-genomics, better the bug you know? *Nature Reviews Microbiology* **4**, 344–357.
- Krogh, A., Larsson, B., von Heijne, G. and Sonnhammer, E. L. (2001). Predicting transmembrane protein topology with a hidden Markov model, application to complete genomes. *Journal of Molecular Biology* **305**, 567–580.
- Krotoski, W. A. (1985). Discovery of the hypnozoite and a new theory of malarial relapse. *Transactions of the Royal Society of tropical Medicine and Hygiene* **79**, 1–11.
- Lal, K., Prieto, J. H., Bromley, E., Sanderson, S. J., Yates, J. R., Wastling, J. M., Tomley, F. M. and Sinden, R. E. (2009). Characterisation of *Plasmodium* invasive organelles; an ookinete microneme proteome. *Proteomics* **9**, 1142–1151.
- Lasonder, E., Ishihama, Y., Andersen, J. S., Vermunt, A. M., Pain, A., Sauerwein, R. W., Eling, W. M., Hall, N., Waters, A. P., Stunnenberg, H. G. and Mann, M. (2002). Analysis of the *Plasmodium falciparum* proteome by high-accuracy mass spectrometry. *Nature* **419**, 537–542.
- Lasonder, E., Janse, C. J., van Gemert, G.-J., Mair, G. R., Vermunt, A. M., Douradina, B. G., van Noort, V., Huynen, M. A., Luty, A. J., Kroeze, H., Khan, S. M., Sauerwein, R. W., Waters, A. P., Mann, M. and Stunnenberg, H. G. (2008). Proteomic profiling of *Plasmodium* sporozoite maturation identifies new proteins essential for parasite development and infectivity. *PLoS Pathogens* **4**, e1000195. Epub 2008 Oct 31.
- Lobley, A. E., Nugent, T., Orengo, C. A. and Jones, D. T. (2008). FFPred, an integrated feature-based function prediction server for vertebrate proteomes. *Nucleic acids research* **36**, (Web Server issue), W297–302.
- Mair, G., Braks, J. A. M., Garver, L. S., Wiegant, J. C. A. G., Hall, N., Dirks, R. W., Khan, S. M., Dimopoulos, G., Janse, C. J. and Waters, A. P. (2006). Regulation of sexual development of *Plasmodium* by translational repression. *Science* **313**, 667–669.
- Martin, R., Ginsburg, H. and Kirk, K. (2009). Membrane transport proteins of the malaria parasite. *Molecular Microbiology* **74**, 518–528.
- Meek, B., Back, J. W., Klaren, V. N., Speijer, D. and Peek, R. (2002). Conserved regions of protein disulfide isomerase are targeted by natural IgA antibodies in humans. *International Immunology* **11**, 1291–1301.
- Mulder, N. J., Apweiler, R., Attwood, T. K., Bairoch, A., Bateman, A., Binns, D., Bork, P., Buillard, V., Cerutti, L., Copley, R., Courcelle, E., Das, U., Daugherty, L., Dibley, M., Finn, R., Fleischmann, W., Gough, J., Haft, D., Hulo, N., Hunter, S., Kahn, D., Kanapin, A., Kejariwal, A., Labarga, A., Langendijk-Genevaux, P. S., Lonsdale, D., Lopez, R., Letunic, I., Madera, M., Maslen, J., McAnulla, C., McDowall, J., Mistry, J., Mitchell, A., Nikolskaya, A. N., Orchard, S., Orengo, C., Petryszak, R., Selengut, J. D., Sigrist, C. J., Thomas, P. D., Valentin, F., Wilson, D., Wu, C. H. and Yeats, C. (2007). New developments in the InterPro database. *Nucleic Acids Research* **35**, (Database issue), D224–D228.
- Muller, H.-M., Crampton, J. M., Della Torre, A., Sinden, R. E. and Frisanti, A. (1993). Members of a trypsin gene family in *Anopheles gambiae* are induced in the gut by bloodmeal. *EMBO Journal* **12**, 2891–2900.
- Naguleswaran, A., Alaeddine, F., Guionaud, C., Vonlaufen, N., Sonda, S., Jenoe, P., Mevissen, M. and Hemphill, A. (2005). *Neospora caninum* protein disulfide isomerase is involved in tachyzoite-host cell interaction. *International Journal for Parasitology* **35**, 1459–1472.
- Nijhout, M. M. and Carter, R. (1978). Gamete development in malarial parasites, bicarbonate-dependent stimulation by pH *in vitro*. *Parasitology* **76**, 39–53.
- Nirmalan, N., Sims, P. F. G. and Hyde, J. E. (2004). Quantitative proteomics of the human malaria parasite *Plasmodium falciparum* and its application to studies of development and inhibition. *Molecular Microbiology* **52**, 1187–1199.
- Okamoto, N., Spurck, T. P., Goodman, C. D. and McFadden, G. I. (2008). The apicoplast and mitochondrion in gametocytogenesis of *Plasmodium falciparum*. *Eukaryotic Cell* **8**, 128–132.
- Olszewski, K. L., Mather, M. W., Morrisey, J. M., Garcia, B. A., Vaidya, A. B., Rabinowitz, J. D. and Llinas, M. (2010). Branched tricarboxylic acid metabolism in *Plasmodium falciparum*. *Nature* **466**, 774–778.
- Paton, M. G., Barker, G. C., Matsuoka, H., Ramesar, J., Janse, C. J., Waters, A. P. and Sinden, R. E. (1993). Structure and expression of a conserved and post-transcriptionally regulated gene encoding a surface protein of the sexual stages from malaria parasite *Plasmodium berghei*. *Molecular and Biochemical Parasitology* **59**, 263–275.
- Peng, J., Elias, J. E., Thoreen, C. C., Licklider, L. J. and Gygi, S. P. (2003). Evaluation of multidimensional chromatography coupled with tandem mass spectrometry (LC/LC-MS/MS) for large-scale protein analysis, the yeast proteome. *Journal of Proteome Research* **2**, 43–50.
- Sam-Yellowe, T. Y., Del Rio, R. A., Fujioka, H., Aikawa, M., Yang, J.-C. and Yakubu, Z. (1998). Isolation of merozoite rhoptries, identification of novel rhoptry-associated proteins from *Plasmodium yoelii*, *P. berghei* and conserved interspecies reactivity of organelles and proteins with *P. falciparum* rhoptry-specific antibodies. *Experimental Parasitology* **89**, 271–284.
- Sam-Yellowe, T. Y., Florens, L., Wang, T., Raine, J. D., Carucci, D., Sinden, R. E. and Yates, J. R. (2004). Proteome Analysis of Rhoptry-Enriched Fractions Isolated from *Plasmodium* Merozoites. *Journal of Proteome Research* **3**, 995–1001.
- Scholz, S. M., Simon, N., Lavazec, C., Dude, M.-A., Templeton, T. J. and Pradel, G. (2007). PfCCp proteins of *Plasmodium falciparum*, Gametocyte-specific expression and role in complement-mediated inhibition of exflagellation. *International Journal for Parasitology* **38**, 327–340.
- Shahabuddin, M. and Pimenta, P. F. P. (1998). *Plasmodium gallinaceum* preferentially invades vesicular ATPase-expressing cells in *Aedes aegypti* midgut. *Proceedings of the National Academy of Sciences U.S.A.* **95**, 3385–3389.
- Silvestrini, F., Bozdech, Z., Lanfrancotti, A., Di Giulio, E., Vultrini, E., Picci, L., deRisi, J. L., Pizzi, E. and Alano, P. (2005). Genome-wide identification of genes upregulated at the onset of gametocytogenesis in *Plasmodium falciparum*. *Molecular and Biochemical Parasitology* **143**, 100–110.
- Sims, P. F. and Hyde, J. E. (2006). Proteomics of the human malaria parasite *Plasmodium falciparum*. *Expert Reviews in Proteomics* **3**, 87–95.
- Sinden, R. E. (1978). Cell Biology. In *Rodent Malaria*. (ed. Killick-Kendrick, R. and Peters, W. A.), pp. 85–186. Academic Press, New York.
- Sinden, R. E. (1983). The cell biology of sexual development in plasmodium. *Parasitology* **86**, 7–28.
- Sinden, R. E., Canning, E. U. and Spain, B. (1976). Gametogenesis and fertilization in *Plasmodium yoelii nigeriensis*, a transmission electron microscope study. *Proceedings of the Royal Society London B* **193**, 55–76.
- Sinden, R. E., Canning, E. U., Bray, R. S. and Smalley, M. E. (1978). Gametocyte and gamete development in *Plasmodium falciparum*. *Proceedings of the Royal Society London B* **201**, 375–399.
- Sinden, R. E., Talman, A., Marques, S. R., Wass, M. N. and Sternberg, M. J. E. (2010). The flagellum in malarial parasites. *Current Opinion in Microbiology* **13**, 491–500.
- Singh, S., Plassmeyer, M., Gaur, D. and Miller, L. H. (2007). Monomere, a new secretory organelle in *Plasmodium falciparum* merozoites identified by localization of rhomboid-1 protease. *Proceedings of the National Academy of Sciences U.S.A.* **104**, 20043–20048.
- Slavic, K., Delves, M. J., Prudencio, M., Talman, A. M., Straschil, U., Derbyshire, E. T., Xu, Z., Sinden, R. E., Mota, M. M., Morin, C., Tewari, R., Krishna, S. and Staines, H. M. (2011). Use of a selective inhibitor to define the chemotherapeutic potential of the plasmodial hexose transporter in different stages of the parasite's life cycle. *Antimicrobial Agents and Chemotherapy* **55**, 2824–2830.
- Southworth, P., Hyde, J. and Sims, P. (2011). A mass spectrometric strategy for absolute quantification of *Plasmodium falciparum* proteins of low abundance. *Malaria Journal* **10**, 315.

- Stanway, R. R.** (2007). The ookinete surface proteome of *Plasmodium berghei*. PhD thesis. Imperial College London, 223p.
- Straschil, U., Talman, A. M., Ferguson, D. J. P., Bunting, K. A., Xu, Z., Bailes, E., Sinden, R. E., Holder, A. A., Smith, E. F., Coates, J. C. and Tewari, R.** (2010). The armadillo repeat protein PF16 is essential for flagellar structure and function in *Plasmodium* male gametes. *PLoS One* **5**, e12901.
- Talman, A. M.** (2010). Molecular studies on *Plasmodium* sexual development. PhD thesis. Imperial College London, 176p.
- Talman, A. M., Lacroix, C., Marques, S. R., Blagborough, A. M., Carzaniga, R., Ménard, R. and Sinden, R. E.** (2011). PbGEST mediates malaria transmission to both mosquito and vertebrate host. *Molecular Microbiology* **82**, 462–474.
- Tarun, A. S., Peng, X., Dumpit, R. F., Ogata, Y., Silva-Rivera, H., Camargo, N., Bergman, L. W. and Kappe, S. H. I.** (2008). A combined transcriptome and proteome survey of malaria parasite liver stages. *Proceedings of the National Academy of Sciences, USA* **105**, 305–310.
- Thompson, J. and Sinden, R. E.** (1994). In situ detection of Pbs21 mRNA during sexual development of *Plasmodium berghei*. *Molecular and Biochemical Parasitology* **68**, 189–196.
- Treeck, M., Sanders, J. L., Elias, J. E. and Boothroyd, J. C.** (2011). The phosphoproteomes of *Plasmodium falciparum* and *Toxoplasma gondii* reveal unusual adaptations within and beyond the parasites' boundaries. *Cell Host and Microbe* **10**, 410–419.
- Tufet-Bayona, M., Janse, C. J., Khan, S. M., Waters, A. P., Sinden, R. E. and Franke-Fayard, B.** (2009). Localisation and timing of expression of putative *Plasmodium berghei* rhoptry proteins in merozoites and sporozoites. *Molecular and Biochemical Parasitology* **166**, 22–31.
- van Schaijk, B. C. L., van Dijk, M. R., van de Vegte-Bolmer, M., van Gemert, G.-J., van Dooren, M. W., Eksi, S., Roeffen, W. F. G., Janse, C. J., Waters, A. P. and Sauerwein, R. W.** (2006). Pfs47, paralog of the male fertility factor Pfs48/45, is a female specific surface protein in *Plasmodium falciparum*. *Molecular and Biochemical Parasitology* **149**, 216–222.
- Vontas, J., Siden-Kiamos, I., Papagiannakis, G., Karras, M., Waters, A. P. and Louis, C.** (2005). Gene expression in *Plasmodium berghei* ookinetes and early oocysts in a co-culture system with mosquito cells. *Molecular and Biochemical Parasitology* **139**, 1–13.
- Wang, Q., Brown, S., Roos, D. S., Nussenzweig, V. and Bhanot, P.** (2004). Transcriptome of axenic liver stages of *Plasmodium yoelii*. *Molecular and Biochemical Parasitology* **137**, 161–168.
- Wass, M. N., and Sternberg, M. J. E.** (2008). ConFunc – functional annotation in the twilight zone. *Bioinformatics* **24**, 798–806.
- Wass, M. N., Kelley, L. A. and Sternberg, M. J. E.** (2010). 3DLigandSite, predicting ligand-binding sites using similar structures. *Nucleic Acids Research* **38**, (Web Server issue), W469–W473.
- Watson, K., Edwards, R. J., Shaunak, S., Parmelee, D. C., Sarraf, C., Gooderham, N. J. and Davies, D. S.** (1995). Extra-nuclear location of histones in activated human peripheral blood lymphocytes and cultured T-cells. *Biochemical Pharmacology* **50**, 299–309.
- Wells, T. N. C., Alonso, P. L. and Gutteridge, W. E.** (2009). New medicines to improve control and contribute to the eradication of malaria. *Nature Reviews Drug Discovery* **8**, 879–891.
- Yeh, E. and DeRisi, J. L.** (2011). Chemical rescue of malaria parasites lacking an apicoplast defines organelle function in blood-stage *Plasmodium falciparum*. *PLoS Biology* **9**, e1001138.
- Yu, C.-S., Chen, Y.-C., Lu, C.-H. and Hwang, J.-K.** (2006). Prediction of protein subcellular localization. *Proteins, Structure, Function, and Bioinformatics* **64**, 643–651.