






RESEARCH ARTICLE

# Longitudinal assessment of blood-borne musculoskeletal disease biomarkers in the DE50-MD dog model of Duchenne muscular dystrophy [version 1; peer review: 1 approved]

Dominique O. Riddell <sup>1</sup>, John C. W. Hildyard <sup>1</sup>, Rachel C. M. Harron <sup>1</sup>,  
Dominic J. Wells <sup>2</sup>, Richard J. Piercy <sup>1</sup>

<sup>1</sup>Comparative Neuromuscular Diseases Laboratory, Department of Clinical Science and Services, Royal Veterinary College, London, NW10TU, UK

<sup>2</sup>Department of Comparative Biomedical Sciences, Royal Veterinary College, London, NW10TU, UK

**V1** First published: 20 Dec 2021, 6:354  
<https://doi.org/10.12688/wellcomeopenres.17398.1>  
 Latest published: 20 Dec 2021, 6:354  
<https://doi.org/10.12688/wellcomeopenres.17398.1>

## Abstract

**Background:** Duchenne muscular dystrophy (DMD) is a fatal muscle wasting disease caused by mutations in the dystrophin gene. Due to their phenotypic similarity to human patients, large animal models are invaluable tools for pre-clinical trials. The DE50-MD dog is a relatively new model of DMD, and carries a therapeutically-tractable mutation lying within the hotspot for human patients, making it especially valuable. Prior to conducting therapeutic trials using this novel animal model, it is essential to establish a panel of viable biomarkers.

**Methods:** We evaluated a panel of blood-borne biomarkers of musculoskeletal disease in the DE50-MD dog. Venous blood samples were obtained monthly throughout an 18-month study period in DE50-MD (N=18) and wild-type (WT) control (N=14) dogs. A panel of potential plasma/serum biomarkers of DMD was measured and their theoretical utility in future clinical trials determined using sample size calculations.

**Results:** Compared to WT dogs, DE50-MD dogs had substantially higher circulating creatine kinase (CK) activities, myomesin-3 (MYOM3), and the dystromiRs miR-1, miR-133a and miR-206, but significantly lower serum myostatin concentrations. An age-associated pattern, similar to that observed in DMD patients, was seen for CK and MYOM3. Sample size calculations suggested that low cohort sizes (N ≤ 3) could be used to detect up to a 50% improvement in DE50-MD results towards WT levels for each biomarker or a combination thereof (via principal component analysis); as few as N=3 animals should enable detection of a 25% improvement using a combined biomarker approach (alpha 0.05, power 0.8).

**Conclusions:** We have established a panel of blood-borne biomarkers that could be used to monitor musculoskeletal disease or response to a therapeutic intervention in the DE50-MD dog using low numbers of

## Open Peer Review

Reviewer Status 

Invited Reviewers

1

version 1

20 Dec 2021

  
report

1. **Clare Rusbridge** , University of Surrey,  
Guildford, UK

Any reports and responses or comments on the article can be found at the end of the article.

animals. The blood biomarker profile closely mimics that of DMD patients, supporting the hypothesis that this DMD model would be suitable for use in pre-clinical trials.

### Keywords

Dystrophin, DMD, biomarker, blood, serum, DE50-MD, canine

**Corresponding authors:** Dominique O. Riddell ([driddell@rvc.ac.uk](mailto:driddell@rvc.ac.uk)), Richard J. Piercy ([rpiercy@rvc.ac.uk](mailto:rpiercy@rvc.ac.uk))

**Author roles:** **Riddell DO:** Conceptualization, Data Curation, Formal Analysis, Investigation, Methodology, Writing – Original Draft Preparation; **Hildyard JCW:** Conceptualization, Data Curation, Formal Analysis, Investigation, Methodology, Writing – Review & Editing; **Harron RCM:** Investigation, Writing – Review & Editing; **Wells DJ:** Supervision, Writing – Review & Editing; **Piercy RJ:** Conceptualization, Funding Acquisition, Methodology, Project Administration, Resources, Supervision, Writing – Review & Editing

**Competing interests:** Richard Piercy has received funding for separate research programmes from Pfizer and Exonics therapeutics and has been a consultant to Exonics Therapeutics; the financial interests were reviewed and approved by the University in accordance with conflict of interest policies. Dominic Wells is or has been a consultant to a wide range of companies with interests in the DMD space including Pfizer, Sarepta, Akashi and Actual Analytics. Studies in his lab have been funded by Proximagen and Shire.

**Grant information:** This work was supported by Wellcome (101550). Dr Riddell's salary was partly supported by Pfizer. *The funders had no role in study design, data collection and analysis, decision to publish, or preparation of the manuscript.*

**Copyright:** © 2021 Riddell DO *et al.* This is an open access article distributed under the terms of the [Creative Commons Attribution License](#), which permits unrestricted use, distribution, and reproduction in any medium, provided the original work is properly cited.

**How to cite this article:** Riddell DO, Hildyard JCW, Harron RCM *et al.* **Longitudinal assessment of blood-borne musculoskeletal disease biomarkers in the DE50-MD dog model of Duchenne muscular dystrophy [version 1; peer review: 1 approved]** Wellcome Open Research 2021, 6:354 <https://doi.org/10.12688/wellcomeopenres.17398.1>

**First published:** 20 Dec 2021, 6:354 <https://doi.org/10.12688/wellcomeopenres.17398.1>

## Introduction

Duchenne muscular dystrophy (DMD) is a fatal, X-linked muscle wasting disease that affects approximately 1 in 6000 human male births worldwide<sup>1</sup>. It is caused by mutations in the dystrophin gene that lead to an absence of functional dystrophin protein, a protein crucial to the structural integrity of muscle as well as having important roles in muscle cell signalling<sup>2</sup>. DMD symptoms include progressive muscle weakness due to repeated cycles of muscle degeneration/regeneration and eventual replacement of muscle with non-contractile tissue<sup>3</sup>. DMD patients become wheelchair-bound in their early teenage years and affected individuals die most commonly as a result of respiratory weakness and infection, or heart failure in their third or fourth decade of life<sup>4,5</sup>. There is currently no cure for DMD and there is a need for more clinically relevant animal models of the disease.

The DE50-MD dog, a recently established canine model of Duchenne muscular dystrophy (DMD), has a point mutation in the 5' donor splice site of intron 50 that results in deletion of exon 50 from dystrophin gene transcripts, with concomitant frameshift and premature protein truncation<sup>6</sup>. This mutation lies within the human mutational "hotspot" region (exons 45-53) and is amenable to exon 51 skipping therapeutic approaches, which would be applicable to the largest proportion of DMD patients<sup>6,7</sup>. In a recent collaboration, we used the DE50-MD model to demonstrate the first successful use of systemic CRISPR/Cas9-mediated gene editing for DMD in a large animal<sup>8</sup>.

For extended therapeutic trials using this novel animal model, it is essential to establish a panel of viable biomarkers. Unlike diagnostic biomarkers (which predominantly serve to distinguish healthy from diseased samples), these biomarkers should not only accurately differentiate diseased from normal animals, but their variance should also be low, so that there can be objective quantitation of therapeutic effect size – the degree to which the disease phenotype is ameliorated by specific treatments. Markers exhibiting modest but consistent changes might therefore prove more useful than those with dramatic but variable differences. Historically, biomarkers commonly used in DMD include indices of motor, respiratory or cardiac function, muscle magnetic resonance imaging (MRI), immunohistochemistry (IHC) of muscle biopsy samples, and blood-borne molecules.

Blood biomarkers are particularly attractive for extended trials: unlike muscle biopsy, blood sampling can be performed comparatively frequently, and samples can be obtained quickly and minimally invasively (without recourse to anaesthesia), at only modest expense. Quantification of creatine kinase (CK) activity, released from the sarcoplasm into the extracellular space when muscle fibres are damaged, is currently the most commonly used blood biomarker for DMD<sup>9</sup>: its serum and plasma activity is markedly higher in DMD patients than healthy controls<sup>10,11</sup>, making it a valuable diagnostic screening tool. Serum CK activity is widely used in the golden retriever muscular dystrophy (GRMD) and canine X-linked muscular dystrophy in Japan (CXMD<sub>J</sub>) models at all ages, as it is elevated from as early as one hour of age in comparison with controls<sup>12-14</sup>. Serum CK activities

are highly sensitive to muscular exertion in DMD, however, and can consequently vary by orders of magnitude between individuals (or between samplings from the same individual), potentially limiting the utility of this biomarker in assessing relative disease severity or subtle improvements<sup>15,16</sup>. Further, large elevations in CK activity arise from even modest degrees of muscle damage<sup>17</sup>. These limitations were revealed in a gene therapy study using the GRMD canine model where prominent and sustained reductions in serum CK activity were not recognised in treated animals, despite improvements in other phenotypic features<sup>18</sup>.

Potentially a more useful serum biomarker could be the myofibrillar structural protein myomesin-3 (MYOM3). MYOM3 is found at the M-band of the sarcomere in striated muscles, and functions in sarcomere stability during stretching<sup>19</sup>. As with CK, MYOM3 can be released into the extracellular space following muscle damage, and accordingly, elevated serum concentrations of this protein are found in human DMD patients, *mdx* mice and the GRMD canine model of DMD<sup>20</sup>. MYOM3 concentrations in DMD patients and *mdx* mice correlate with muscle mass, and thus follow a similar pattern to serum CK activity with age (being higher in young DMD patients compared to healthy controls and older DMD patients<sup>20,21</sup>), but this marker exhibits less inter-individual variation<sup>20</sup>. A study by Rouillon *et al.*, 2015, showed that MYOM3 serum concentrations in the GRMD dog model were 100 times higher in affected compared to control dogs<sup>20</sup>, though only wild type (WT) and GRMD dogs at 2 and 18 months of age were compared. Serum MYOM3 concentrations were also reported to inversely correlate with extent of muscle dystrophin restoration following exon skipping in *mdx* mice, revealing its use as a biomarker for pre-clinical treatment trials<sup>20</sup>.

Another protein that has long been of interest in DMD, but has only recently gained attention as a biomarker, is myostatin (MSTN), a protein within the transforming growth factor  $\beta$  family that is secreted by skeletal muscle to modulate muscle growth<sup>22</sup>. Loss of one or both copies of the MSTN gene results in profound systemic muscle hypertrophy<sup>23,24</sup>, and thus promotion of muscle growth via MSTN inhibition has been investigated as a potential therapy for DMD. However, despite promising results in pre-clinical mouse studies<sup>25-27</sup>, clinical trials have failed to produce sufficient evidence of clinical efficacy in humans<sup>28-30</sup>. One proposed explanation for the lack of efficacy is that patients with muscular dystrophy already have very low levels of MSTN compared to healthy subjects<sup>31</sup>. Indeed, several studies have found reduced concentrations of circulating MSTN in DMD patients<sup>27,31-33</sup>, as well as in the GRMD dog model of DMD<sup>34</sup>. Further, reduced mRNA expression of MSTN and its receptor (activin receptor IIB, ACVR1IIB) in muscle biopsy samples from both DMD patients and GRMD have been reported, suggesting a downregulation of MSTN pathways<sup>31,34</sup>.

In addition to these proteins, circulatory microRNAs (miRs) represent promising potential candidates for serum biomarkers: miRs can be isolated from small volumes (100-200ul) of serum comparatively easily, and following reverse transcription and

quantitative polymerase chain reaction (RT-qPCR) miRs can be detected with very high specificity, and a sensitivity spanning multiple orders of magnitude. Mammals are estimated to have thousands of unique microRNAs<sup>35</sup>, and panels of specific dysregulated miRs have been proposed as potential diagnostic markers for many disease states, including Alzheimer’s<sup>36</sup>, infectious diseases<sup>37</sup> and a wide range of cancers<sup>38</sup>. For DMD, three ‘dystromiRs’ (miR-1, miR-133a and miR-206) have been proposed as biomarkers<sup>39–41</sup>: these miRs are striated muscle-specific and are dramatically elevated in both DMD patients and the *mdx* mouse, and have been reported to fall in response to therapeutic exon skipping<sup>39</sup>. These dystromiRs are also elevated in serum of canine models of DMD, such as the CXMD<sub>J</sub><sup>42</sup> and GRMD<sup>43</sup>.

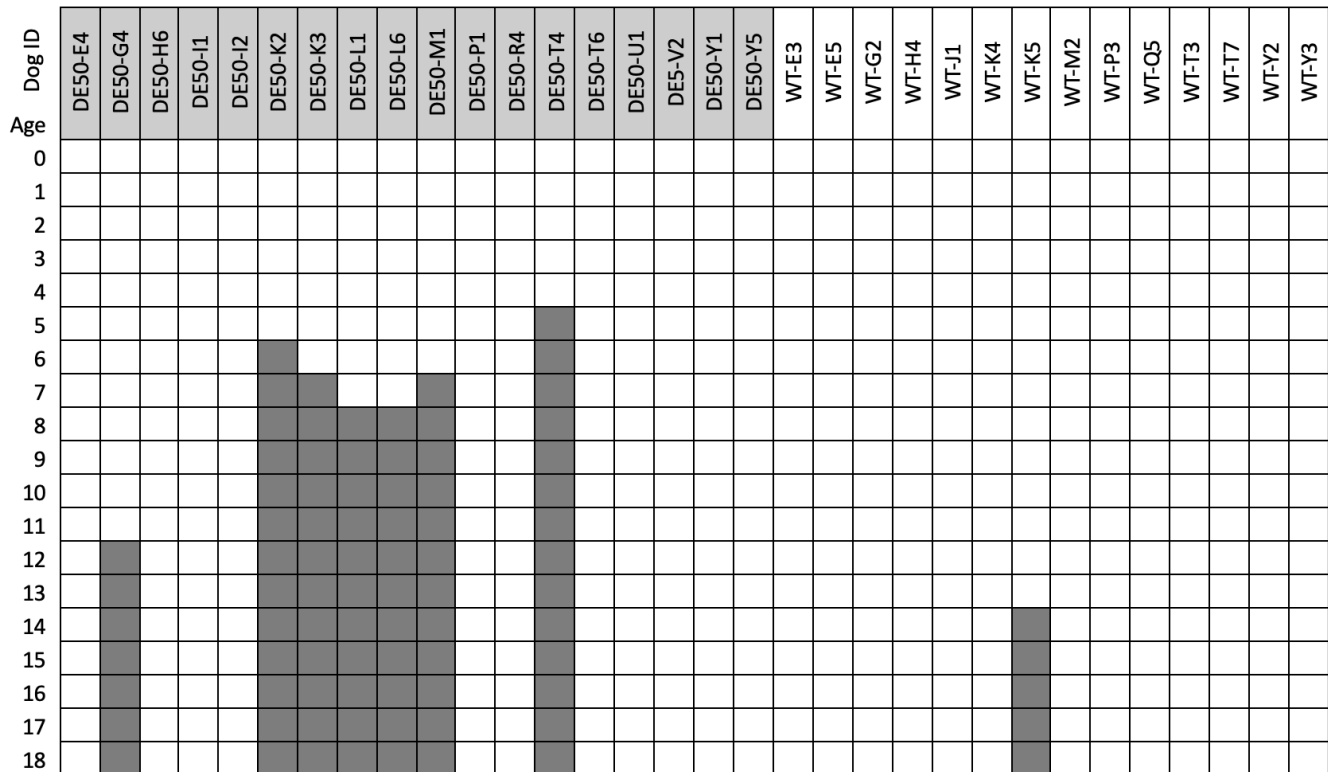
The aim of this study was to establish a panel of blood-borne musculoskeletal disease biomarkers that distinguish between the DE50-MD dog model and WT dogs, with the hypothesis that the DE50-MD dog biomarker profile reflects that of human DMD and further, that these biomarkers will be of sufficient sensitivity and stability to serve as outcome measures in future DE50-MD pre-clinical treatment trials.

**Methods**

**Animal husbandry:** Dogs used in this study were from the DE50-MD colony, housed in a dedicated facility at the Royal Veterinary College (RVC), London. Dogs were group-housed (according to temperament and hierarchy) indoors in large

pens with daily access to outdoor paddocks (12-hour light/dark cycle, 15–24°C): conditions that exceed the minimum stipulations of the Animal (Scientific Procedures) Act 1986 and according to RVC local Animal Welfare Ethical Review Body approval. Carrier female Beagle (RCC strain, Marshall Bioresources)-cross dogs, derived from an original founder Bichon-Frise cross Cavalier King Charles Spaniel female carrier, were mated with male Beagles (RCC strain) to produce all dogs for this study. Pregnant females (single housed) whelped naturally and puppies were kept with the mother in a large pen with a heat lamp (~28°C) to allow nursing. All puppies were microchipped at seven days of age. Puppies were reared by their mother until approximately four weeks, after which they were transitioned to puppy food (Burns) suitable to requirements: puppies under six months were fed at least three times daily with milk or tinned food and/or had ad-lib dry puppy food available. From six months onwards, dogs received two feeds daily and ad lib water. Dogs received daily human interaction and underwent a comprehensive socialisation programme. Dogs not required for studies were rehomed.

**Study population:** All dogs used in the study were male. In total, data from 37 DE50-MD dogs and 35 WT dogs are included in this study (total 72); of these, 18 DE50-MD dogs and 14 WT dogs were studied longitudinally between 0 and 18 months of age (Figure 1). Sample size for the longitudinal study was determined in order to generate an accurate estimation of the variance for each time point and genotype, to enable future



**Figure 1. Blood sampling ages (in months) for dogs studied longitudinally.** Dog ID shows the study name of each individual animal included in the longitudinal study: dog IDs with the preface “DE50-” (light grey) are DE50-MD dogs, dogs with the preface WT (white) are wild-type dogs. Dark grey boxes indicate that the animal was euthanised prior to the collection timepoint.

sample size calculations, as reported in this paper. The remaining animals were male puppies, with data compiled from routine genotyping (perinatally) comprising Sanger sequencing of the DE50-MD mutation region and plasma CK activity measured within the first 8 days of life from a further 19 DE50-MD dogs and 21 WT dogs (see *Underlying data*); these dogs were subsequently, either rehomed (WT dogs only) or recruited to other studies. N values for each measurement are shown below each figure. Dependent on the biomarker analysed, it was not always possible to test samples from all timepoints for each dog. Missing data-points were a consequence of exhausting the finite supply of blood or tissue sample collected at a specific time-point, unless otherwise stated. Full details of samples tested for each biomarker can be found in *Underlying data*.

Genotyping was performed on cheek-swab derived DNA by PCR and Sanger sequencing as previously described<sup>8</sup>. Briefly, cells were collected from the inside of the dog's cheek using a bristled cheek swab. Genomic DNA was extracted from the cells, and the region of the *DMD* gene containing the DE50-MD mutation was amplified by polymerase chain reaction (PCR). PCR products were sequenced externally (Sanger sequencing by GATC biotech/Eurofins). With the exception of confirming the genotype as WT male or DE50-MD male, no additional inclusion or exclusion criteria were used when recruiting dogs to the study. Researchers involved in data acquisition and data analysis for this study were not blinded to genotype.

**ARRIVE guidelines:** ARRIVE guidelines were followed for the design and conduct of the study and an E10 checklist completed (see *Underlying data*). All experimental procedures involving animals in this study were conducted according to UK legislation, within a project licence (P9A1D1D6E, granted 11 June 2019) assigned under the Animal (Scientific Procedures) Act 1986 and approved by the Royal Veterinary College Animal Welfare Ethical Review Body (AWERB). All efforts were made to minimise any animal suffering throughout the study. Pre-determined end-points for DE50-MD dogs were established including dehydration (unresolved by fluid treatment), lethargy/motor dysfunction, weight loss/dysphagia, dyspnoea, listless behaviour/demeanour, or heart failure. Dogs were observed daily by animal technician staff and those showing any of these signs were reported to and assessed by the Study Director, the Named Veterinary Surgeon (NVS) and the Named Animal Care and Welfare Officer (NACWO). Should a dog reach any of the pre-determined end-points prior to the planned 18-month study end, they were humanely euthanised. Euthanasia was performed using an overdose of sodium pentobarbital (250mg/kg) administered intravenously via preplaced catheter. Of the 18 DE50-MD dogs that were followed longitudinally, 11 were euthanised at the end of the planned 18-month study period (for research purposes unrelated to this study), 6 DE50-MD dogs were euthanised prior to 8 months of age as a result of reaching pre-determined humane end-points (related to dysphagia), and 1 DE50-MD dog (DE50-G4) was euthanised at 11 months of age due to (presumed congenital) elbow dysplasia, believed

unrelated to the DMD phenotype (Figure 1). Four of the 14 WT dogs that were followed longitudinally were euthanised humanely at the end of the planned 18-month study period (WT-G2, WT-J1, WT-K4 and WT-M2) for research purposes unrelated to this study, and one further WT dog (WT-K5) was euthanised at 14-months of age due to developing steroid-responsive meningitis, a condition known to affect the Beagle breed<sup>44</sup>. The remaining nine WT dogs were re-homed (Figure 1).

### Blood sampling

Blood was obtained at approximately monthly intervals by jugular venepuncture into plain (serum) and lithium heparin (plasma) tubes. Blood samples were centrifuged (Heraeus, #3328) at 500 x g for 10 minutes at 4°C. Serum or plasma (as appropriate) was aspirated, aliquoted and frozen at -80°C until analysed.

### CK activity

CK activity was quantified in lithium heparinised plasma, using a Ilab600 (Instrumentation Laboratory) clinical chemistry analyser.

### MYOM3 western blot

Serum samples were diluted 1:1000, and 5ul of diluted sample was combined with 5ul of loading buffer (4% sodium dodecyl sulphate (Applichem, #A0676), 20% glycerol (Sigma, #G5516), 0.004% bromophenol blue (Sigma, #B0126), 0.125M Tris-HCl pH 6.8 (Sigma, #T3253), 10% β-mercaptoethanol (Sigma, #M7154)). Samples were then loaded into Tris/Glycine PAGE gels (7.5% Mini-PROTEAN TGX precast gels, Biorad, #4561026). All samples were tested in duplicate, on replicate gels. Gels were placed into an electrophoresis chamber (Biorad, #1658005EDU) with running buffer (10x TGS Buffer, Bio-Rad, #161-0732) and run at 90 volts, for 90 minutes. Proteins were transferred from the gel to a polyvinylidene difluoride blotting membrane (GE Healthcare, #10600023) by incubation in the electrophoresis chamber with transfer buffer (10x TG Buffer, Bio-Rad, #161-0734) at 300 amps for 90 minutes. Membranes were blocked in 10% milk powder (Marvel) in phosphate buffered saline (PBS, Fisher Scientific, #BR0014G)/Tween 0.05% (Sigma, #P9416) for one hour at room temperature, before incubation with a polyclonal rabbit anti-human MYOM3 antibody (Proteintech, #17692-1-AP, 1:1000 dilution) and a polyclonal rabbit anti-canine albumin antibody (as internal loading control, Biorbyt Ltd, #orb242465; 1:1,000,000 dilution) overnight at 4°C. The following day, membranes were washed over an hour in PBS/Tween 0.05% before incubation with a horseradish peroxidase-conjugated polyclonal goat anti-rabbit IgG secondary antibody (Dako, #P0448, 1:10,000 dilution, one hour at room temperature). Membranes were developed using Enhanced chemiluminescence (ECL - ThermoFisher, #32106), and were imaged on a ChemiDoc™MP Imaging System (Bio-Rad). After imaging, signals were quantified via densitometry using ImageJ software. Probing for MYOM3 gives 2 clear bands at approximately 100 kDa and 140 kDa (as seen in previous studies<sup>20</sup>), while albumin is detected at approximately 55 kDa. Densitometry data for both MYOM3 bands was combined and normalised to albumin.



### MSTN ELISA

MSTN was quantified in serum samples by sandwich enzyme-linked immunosorbent assay (ELISA) according to the manufacturer's instructions (R&D Systems, #DGDF80).

### DystromiR RT-qPCR

**RNA isolation and cDNA synthesis:** microRNAs were isolated from frozen serum samples (100-200ul per sample point) using the miRNeasy serum/plasma kit (Qiagen, #217184). cDNA was prepared via miScript II RT kit (Qiagen, #218161) using 3ul of serum RNA (low RNA content of serum precludes accurate quantification via nanodrop). All cDNA preparations were subsequently diluted 1/20 with nuclease free water.

**Quantitative PCR (qPCR):** Following cDNA synthesis, qPCR was conducted via the miScript PCR System (Qiagen, #218073) in 10ul vols (2ul cDNA) using a CFX384 light-cycler (BioRad), with primers specific to *Canis familiaris* miR-1 (Qiagen, #MS00029337), miR-133a (#MS00029498) and miR-206 (#MS00030009) along with a universal primer (Qiagen, #218073). A melt curve was included in each run. Pilot work suggested miR-23a (primers: Qiagen, #MS00030170) and miR-223 (#MS00030126) were suitable references, and these two miRs were robustly expressed in all samples (see *Underlying data*). Analysis of our full dataset however revealed a modest but significant increase in miR-23a within dystrophic samples. All samples were thus normalised to miR-223 alone (this miR exhibited no significant disease association). As a further QC step, any samples with miR-23a/miR-223 Cq values nearing the stochastic range (Cq>27, indicating low RNA recovery or poor cDNA synthesis) were excluded from analysis: 8 samples (out of 207) were rejected in this manner (6 WT, 2 DE50-MD).

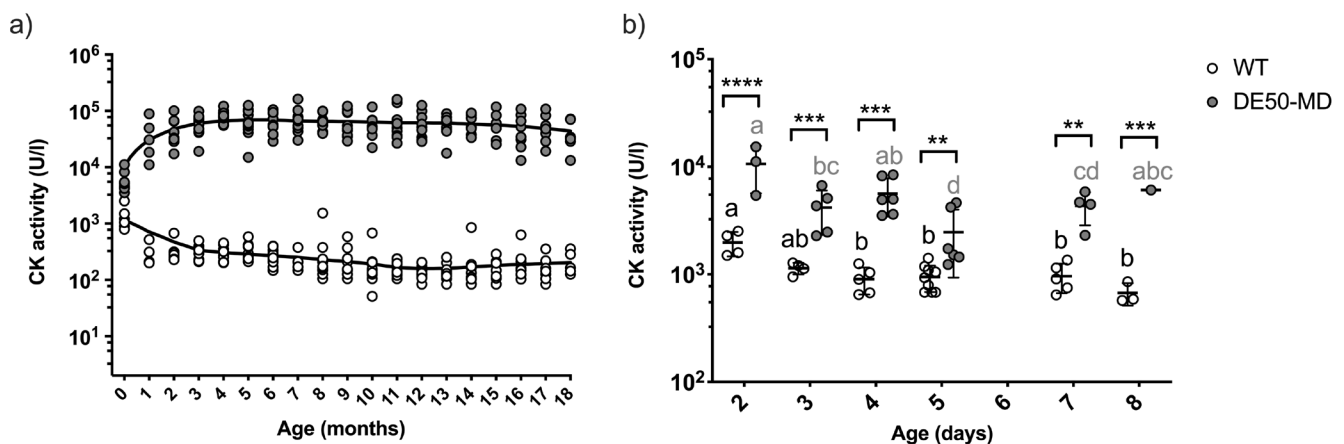
### Statistical analysis

Linear mixed models were used to determine the effects of age, genotype and their interaction for CK activity, MYOM3, MSTN, and miRs. *Post hoc* analysis was performed using Tukey's multiple comparisons test. A principal component analysis was used to reduce dimensions of the full biomarker dataset (CK activity, MYOM3, MSTN, and miR-1, -133a and -206). P values of less than 0.05 were considered statistically significant. Linear mixed modelling, *post hoc* analyses and the principal component analysis were performed using IBM SPSS Statistics Version 28 and graphs were produced using Graphpad Prism 8.0. Free software alternatives could also be used, such as **R** or **JASP**. Estimates of sample size that would be appropriate for prospective therapeutic trials with the colony were performed using GLIMMSE online software<sup>45</sup>, using a repeated measures model and a desired power of 0.8. Data was tested for normality by Shapiro-Wilk test and, where appropriate, data was log transformed prior to statistical analysis. Comparison of biomarker data from DE50-MD dogs that were euthanised prior to 8 months of age with age-matched DE50-MD dogs that were maintained for the full 18-month study period revealed no statistical differences for any marker evaluated (linear mixed model adjusted for repeated measures,  $P>0.05$ , see *Extended data*), thus all data from these six animals was included in our analysis.

### Results

#### CK activity

Monthly measurement of plasma CK activity revealed substantially higher levels in DE50-MD dogs than WT dogs at all time-points ( $P<0.0001$ ; [Figure 2](#))<sup>46</sup>. There was considerable variation in CK activity within DE50-MD dogs (mean = 60600 U/l +/- 30200

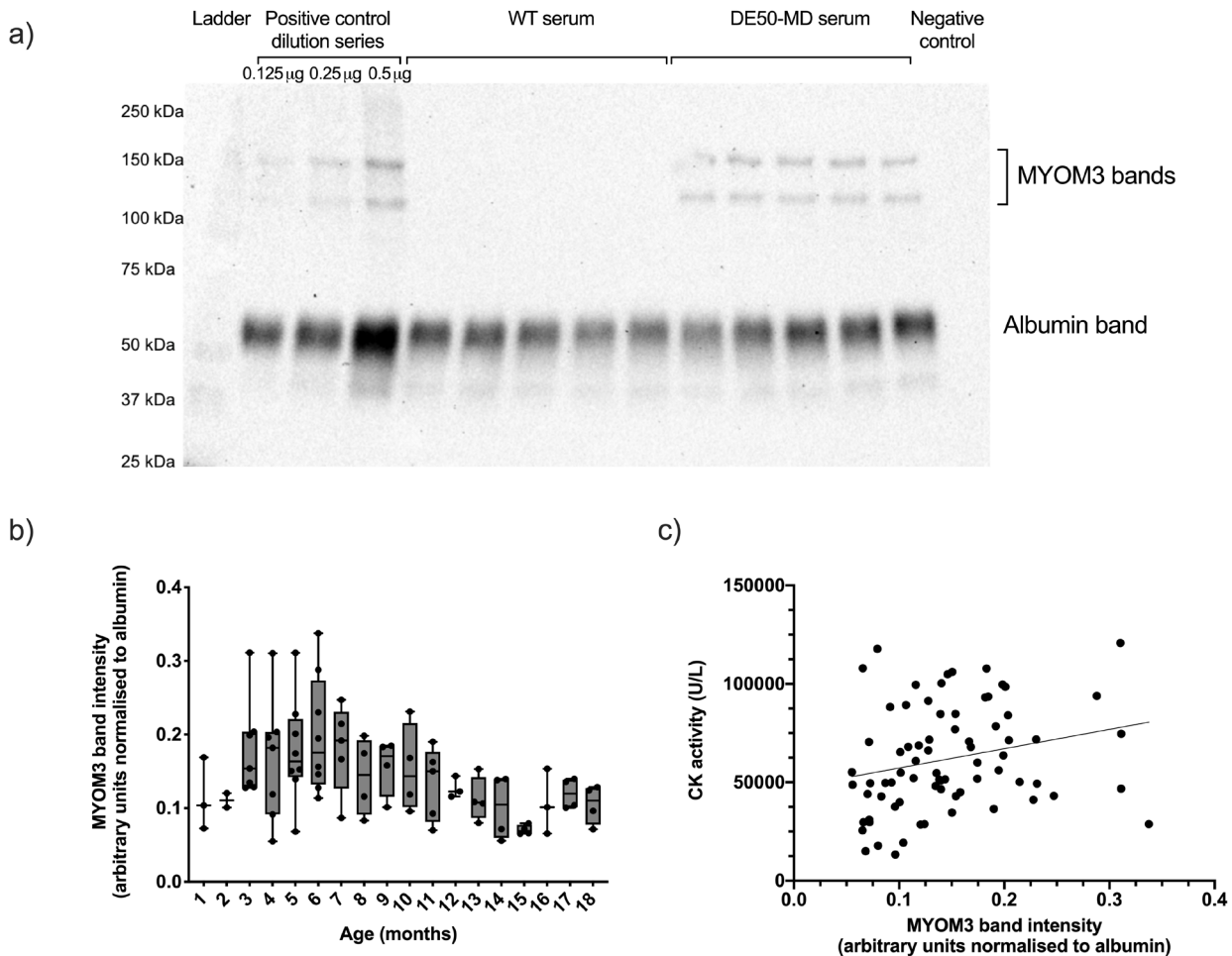


**Figure 2. Plasma CK activity in DE50-MD and WT dogs.** Figure **a**) data points represent individual DE50-MD (grey) or WT (white) dogs at different ages. Dogs were studied longitudinally between 1 and 18 months of age. DE50-MD: total N=18 dogs, N=5-17 per age group; WT: total N=14 dogs, N=4-14 per age group. Data points at age 0-months represent samples taken within the first week of life. Lowess curves show the general trend in CK activity with age in each genotype. Plasma CK activity was significantly higher in DE50-MD compared to WT dogs at all timepoints (linear mixed model analysis adjusted for repeated measures,  $P<0.0001$ ). Figure **b**) CK activity in DE50-MD (grey, N=28 dogs) and WT (white, N=26 dogs) plasma samples collected within the first 8 days of life. Asterisks denote the level of significance of a difference between genotypes based on linear mixed model analysis: \*\*  $P<0.01$ , \*\*\*  $P<0.001$ , \*\*\*\*  $P<0.0001$ . (CK: creatine kinase; WT: wild type.)

standard deviation (SD); range: 3500-160000 U/l; N=18), but levels were consistently elevated above those found in WT dogs (WT range: 50-2500 U/l; N=14). There was a modest, but significant, interaction between CK activity and age in both genotypes (DE50-MD:  $P=0.003$ ; WT:  $P<0.0001$ ), however the trend of this effect was different between the two genotypes ( $P=0.003$ ). A fitted Lowess regression curve showed that DE50-MD plasma CK activity steadily increased up to 5 months of age, with a subsequent gradual fall from five to 18 months (Figure 2a). In contrast, WT plasma CK activity decreased from one to 10 months of age, at which point it plateaued until the final time-point of 18 months. Differences in plasma CK activity were detectable at very young ages: CK activity in animals aged two to eight days old were significantly higher in DE50-MD dogs compared to WT ( $P<0.01$ , Figure 2b).

### Myomesin 3 (MYOM3)

Serum MYOM3 protein was significantly associated with genotype ( $P<0.0001$ ), being robustly detected in all DE50-MD serum samples tested (total DE50-MD samples N=83, from 10 different dogs, N=2-8 per age group, Figure 3)<sup>47</sup>, but not found in any WT sample tested (total WT samples N=113, from 10 different dogs, N=3-9 per age group). Levels of MYOM3 in DE50-MD serum ranged from 0.06-0.34 (mean 0.15  $\pm$  0.06, arbitrary units: albumin-normalised band intensity), and exhibited a significant effect of age ( $P<0.001$ ): MYOM3 levels peaked at 6 months and declined thereafter. Between three and five months of age, one particular DE50-MD dog (DE50-L1) had substantially higher MYOM3 levels than any other age-matched dog (Figure 3b). This dog was euthanised at seven months of age due to dysphagia (a pre-defined humane end-point of the study).



**Figure 3. MYOM3 in serum samples from DE50-MD and WT dogs.** Figure a) representative MYOM3 western blot. This western blot shows a positive control mini-dilution series that was run alongside samples in every gel, followed by 5 samples of WT control dog serum, 5 samples of DE50-MD dog serum, and a negative control lane in which no protein was loaded. Figure b) MYOM3 quantified by western blot in serum samples from dogs studied longitudinally between 1 and 18 months of age. DE50-MD: grey, total N=83 samples, from N=10 dogs, N=2-8 per age group; WT dogs: (not shown, see *Underlying data*), total N=113 samples, from N=10 dogs, N=3-9 per age group. Bands corresponding to MYOM3 were not detected in any WT serum samples tested. Boxes extend from the 25<sup>th</sup> to 75<sup>th</sup> percentile, with a line within the box at the median value. Each point represents an individual sample, and whiskers show the minimum and maximum results for that age-group. Band intensity calculated by densitometry using ImageJ software. Figure c) correlation between MYOM3 quantity and CK activity in blood samples from DE50-MD dogs studied longitudinally between 1 and 18 months, total of N=75 samples, from N=10 dogs. (MYOM3: myomesin-3; WT: wild type.)

Serum MYOM3 in DE50-MD dogs positively correlated with plasma CK activity (linear mixed model estimate of slope gradient: 101000, +/- 30000 SE,  $P=0.001$ , [Figure 3c](#)).

### Myostatin (MSTN)

Serum MSTN concentration was, on average, 2.3-fold higher in WT serum compared to DE50-MD serum across all ages measured ( $P<0.05$ ; DE50-MD: mean MSTN = 8.8 ng/ml +/- 3.5 SD; WT: mean MSTN 19.8 ng/ml +/- 6.3 SD; [Figure 4](#)). In the WT cohort, MSTN concentration peaked at nine months of age, remaining at this level for all subsequent age points. Within the DE50-MD genotype, mean MSTN concentration peaked at a later stage (between 12–15 months), though closer examination reveals one DE50-MD dog exhibited markedly higher MSTN concentration than all other age-matched DE50-MD dogs between 12 and 18 months (DE50-I2, [Figure 4](#) dashed grey line). Excluding this individual from analysis removed any age-associated differences in MSTN within the DE50-MD genotype.

### DystromiRs

All three dystromiRs were markedly elevated in DE50-MD serum ([Figure 5](#)): under linear mixed model analysis, genotype was highly significant ( $P<0.0001$ ) for all three miRs, while the effect of time was not significant for any (though a modest interaction of genotype and time was detected). All three miRs were significantly elevated at all time points ( $P<0.0001$ , [Figure 5](#)). Although the mean quantity for each of the three miRs was markedly higher in DE50-MD compared to WT samples, there was considerable variation within age groups for both genotypes ([Figure 5](#)).

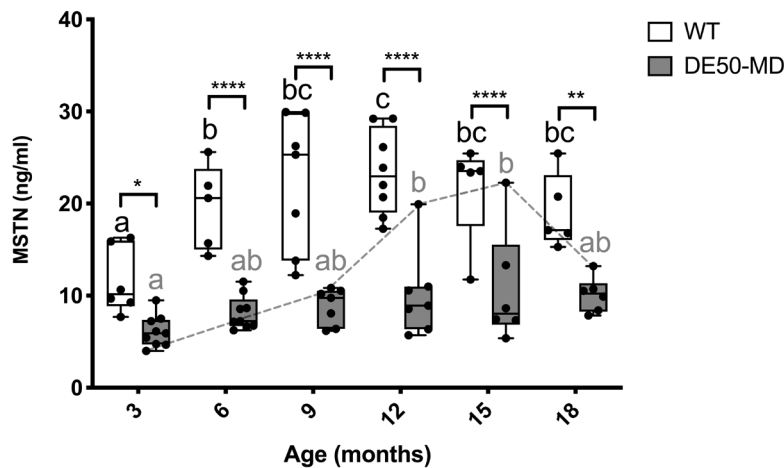
Raw Cq data indicated that serum concentrations of these three miRs were typically very low in healthy samples (often nearing

the lower limit of detection), while levels in DE50-MD serum were more robust (3–4 orders of magnitude greater, comparable with levels of the reference, miR-223). This implies that these miRs are not typically present in healthy serum. In one instance, concentration of serum miR-133a rose to near-DE50-MD levels in a single healthy dog (WT-H4, indicated by the grey dashed trace, [Figure 5b](#)). This specific miR remained elevated for four consecutive months (months 5–8), while levels of miR-1 and miR-206 remained comparable with other healthy animals. We were unable to determine the cause of this increase, but this finding highlights the importance of adequately-powered sample cohorts and longitudinal data collection.

CK activity positively correlated with relative quantity of each of the three miRs in DE50-MD samples (miR-1: slope gradient estimate: 1.1 +/- 0.3 SE,  $P<0.00001$ ; miR-133a: slope gradient estimate: 0.9 +/- 0.3 SE,  $P=0.003$ ; miR-206: slope gradient estimate: 1.3 +/- 0.2 SE,  $P<0.00001$ ; [Figure 6](#)), but not in WT samples (miR-1:  $P=0.53$ ; miR-133a:  $P=0.27$ ; miR-206:  $P=0.73$ ; see [Underlying data](#)).

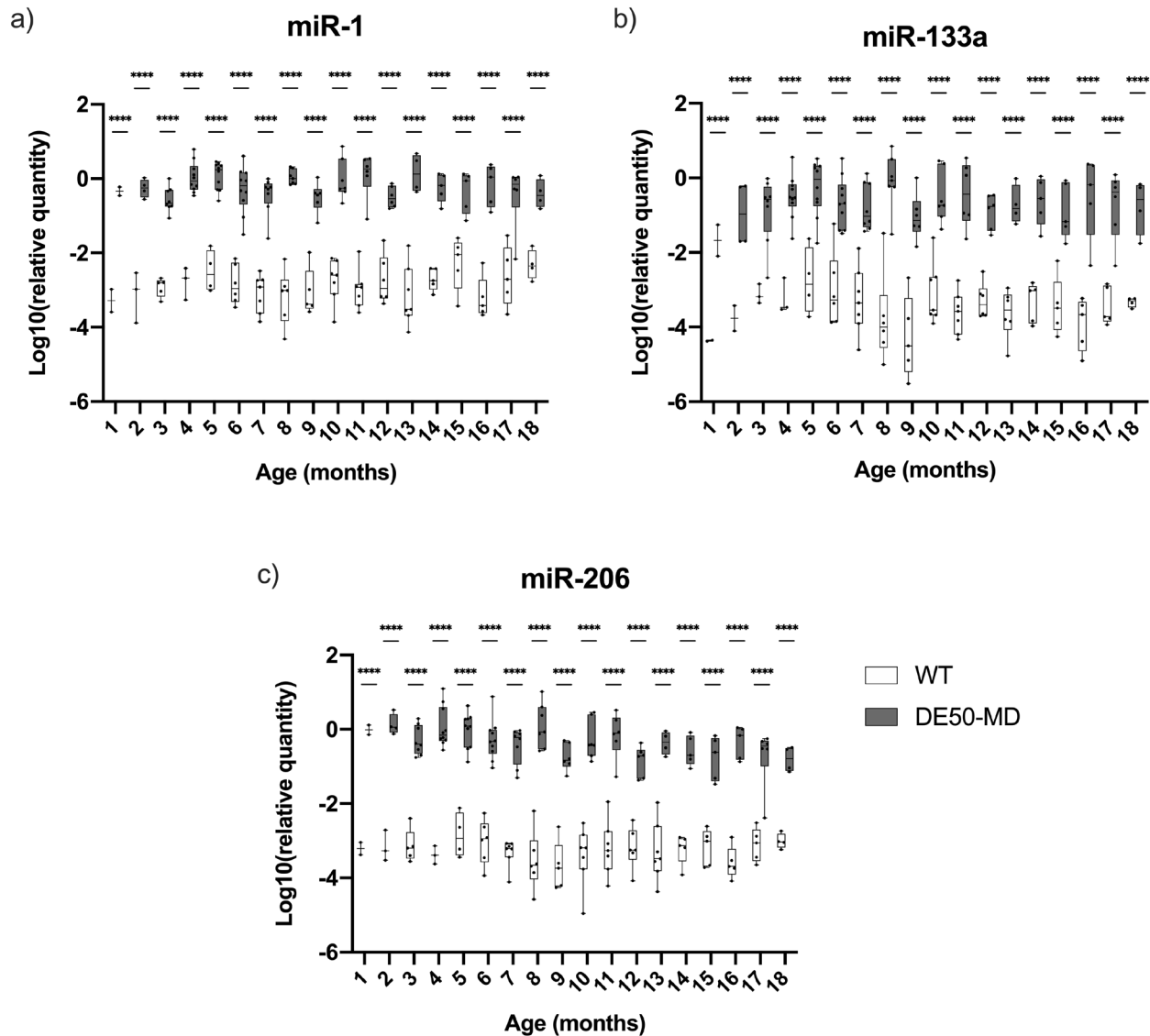
### Principal component analysis

A principal component analysis was performed to evaluate all six musculoskeletal blood-borne biomarkers quantified in this study. Dogs that were missing data for more than one biomarker were excluded from analysis; when a single biomarker was missing for an animal, the missing value was replaced with the mean within the relevant genotype and age-group (for raw data see [Underlying data](#)). One principal component was extracted that explained 84% of the variation within the dataset. Values for the principal component were substantially higher for DE50-MD dogs than WT dogs at all ages (three to 18 months; [Figure 7](#)). There was a peak in the principal component score at



**Figure 4. MSTN concentration in serum samples from DE50-MD and WT dogs.** Samples were collected at 3-monthly intervals (from 3 to 18 months of age) from DE50-MD and wild-type (WT) control dogs studied longitudinally. DE50-MD: grey, total N=10 dogs, N=6-9 per age group; WT: white, N=8 dogs, N=5-8 per age group. Boxes extend from the 25<sup>th</sup> to 75<sup>th</sup> percentile, with a line within the box at the median value. Each point represents an individual sample, and whiskers show the minimum and maximum results for that age-group. Asterisks denote the level of significance of a difference between genotypes based on linear mixed model analysis adjusted for repeated measures: \* $P<0.05$ , \*\*  $P<0.01$ , \*\*\*\* $P<0.0001$ . Letters a, b and c denote statistically significant differences ( $P<0.05$ ) in the mean within either the DE50-MD (grey letters) or WT (black letters) genotypes: means sharing a letter are not significantly different within each genotype group. (MSTN: myostatin; WT: wild type.)





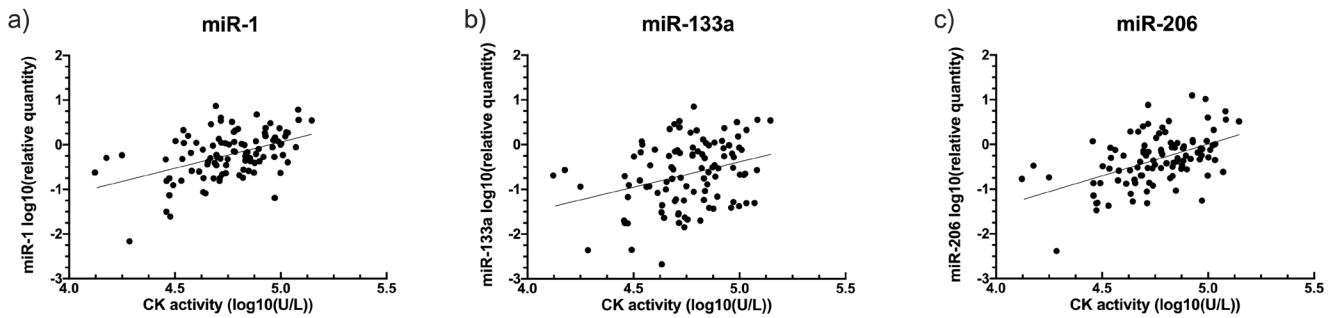
**Figure 5. Relative dystromiR quantity in serum samples from DE50-MD and WT dogs.** Figure **a**) miR-1, **b**) miR-133a, the grey dashed trace indicates miR-133a results for a single healthy dog (WT-H4) that rose to near-DE50-MD levels between 5 and 8 months of age, and **c**) miR-206. DystromiR concentrations were normalised to a reference miR: miR-223 (see methods). Samples were taken from DE50-MD and wild-type (WT) control dogs studied longitudinally between 1 and 18 months of age. DE50-MD: grey, total N=12 dogs, N=2-10 per age group; WT: white, N=8 dogs, N=2-8 per age group. Boxes extend from the 25<sup>th</sup> to 75<sup>th</sup> percentile, with a line within the box at the median value. Each point represents an individual sample, and whiskers show the minimum and maximum results for that age-group. Asterisks denote the level of significance of a difference between genotypes based on linear mixed model analysis adjusted for repeated measures: \*\*\*\*P<0.0001. (WT: wild type.)

six months in the DE50-MD dogs, and a subsequent decrease to a plateau between months 12 to 18. In contrast, WT dogs exhibited a decrease in the principal component score between months three to nine, followed by a gradual increase through to month 18.

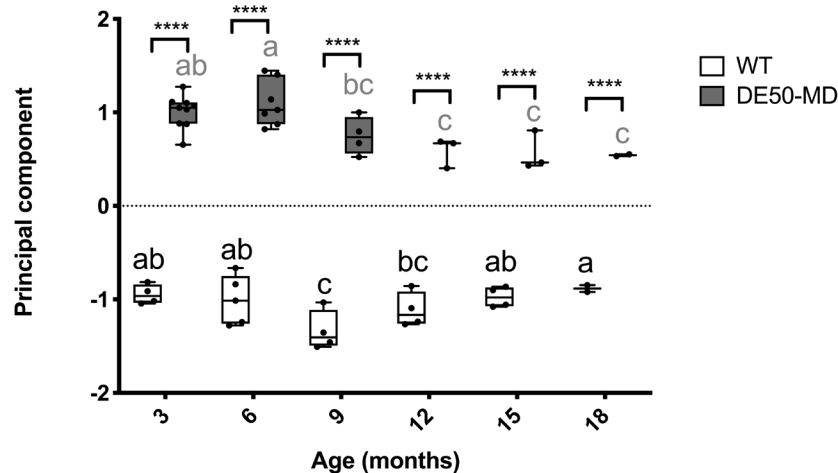
#### Sample size calculations for future trials

Sample sizes that would likely be appropriate for future prospective trials of therapeutics were calculated for all biomarkers

identified in the study, and for the derived principal component identified above. Principal component output (AU), CK activity (log<sub>10</sub> U/L), MYOM3 (AU), MSTN (ng/ml), and miR-1, -133a and -206 (log<sub>10</sub> relative quantities) all required very small numbers of dogs (seven or fewer) per genotype to detect as little as a 25% improvement in the biomarker result towards WT levels (Table 1). Note that the large inter-individual variation and skew within CK activity and miR quantity datasets necessitated log transformation for statistical analyses, therefore



**Figure 6. Relationship between creatine kinase (CK) activity and relative quantity of dystromiRs in DE50-MD dog blood samples.** Figure **a)** miRs-1 **b)** miR-133a and **c)** miR- 206. Linear regression calculated based on linear mixed model analysis, accounting for repeated measures. Samples were taken from DE50-MD and wild-type (WT) control dogs studied longitudinally between 1 and 18 months of age. Each point represents an individual sample (N=101 for each miR) from a total of N=12 DE50-MD dogs. No relationship was found between CK activity and the relative quantity of any of the miRs in WT samples (not shown, see *Underlying data*) ( $P>0.05$ ). (CK: creatine kinase; WT: wild type.)



**Figure 7. Principal component analysis of serum and plasma biomarkers.** Included in the analysis was plasma CK activity ( $\log_{10}$  U/l), serum MYOM3 quantity (AU), serum MSTN concentration (ng/ml), serum miR-1, miR-133a and miR 206 levels ( $\log_{10}$  relative quantity). Study population consisted of DE50-MD and wild-type (WT) dogs studied longitudinally between 3 and 18 months of age. DE50-MD: grey, N=10 dogs total, N=2-9 per age group; WT: white, N=7 dogs total, N=2-5 per age group. Where an individual was missing data for a specific biomarker, missing data was replaced with the mean of the relevant genotype and age-group for that biomarker. Boxes extend from the 25<sup>th</sup> to 75<sup>th</sup> percentile, with a line within the box at the median value. Each point represents an individual sample, and whiskers show the minimum and maximum results for that age-group. Asterisks denote the level of significance of a difference between genotypes based on linear mixed model analysis: \*\*\*\* $P<0.0001$ . Letters a, b and c denote statistically significant differences ( $P<0.05$ ) in the mean within either the DE50-MD (grey letters) or WT (black letters) genotypes: means sharing a letter are not significantly different within each genotype group. (CK: creatine kinase; WT: wild type.)

percentage improvements are based on log values for this subset of biomarkers.

## Discussion

The purpose of this study was to evaluate candidate blood biomarkers of musculoskeletal disease in the DE50-MD dog model of DMD, for use in future pre-clinical longitudinal trials. Our focus was to identify biomarkers demonstrating sufficient consistency and sensitivity to allow detection of even modest amelioration of disease (such as might be found in early responses to therapeutic intervention). Given the minimally-invasive nature

of blood sampling, a panel of such biomarkers could then be used to monitor disease progression in extended therapeutic trials in DE50-MD dogs.

Plasma creatine kinase (CK) activity in the DE50-MD dog model was markedly elevated at all ages and showed a similar trend to that seen in human DMD patients<sup>48</sup>, peaking earlier in life and then subsequently decreasing. As release from damaged muscle tissue represents the principal source of circulatory CK, the slow decline with age observed in DE50-MD dogs likely reflects both systemic decreases in muscle mass, and

**Table 1. Sample size calculations.** N required to show with sufficient power (0.8) an improvement in a DE50-MD biomarker towards WT levels with any given treatment. Sample sizes were calculated for the principal component analysis output (performed on blood-borne CK activity, MYOM3 quantity, MSTN concentration, and miR-1, -133a and -206 relative quantity) and for each individual biomarker that was significantly elevated in DE50-MD compared to WT blood samples for dogs aged 3–18 months. (CK: creatine kinase; MSTN: myostatin; MYOM3: myomesin-3; WT: wild type.)

Biomarker	Percentage improvement towards WT concentrations			
	(N per genotype)			
	25%	50%	75%	100%
Principal component	3	2	2	2
CK activity (Log10 U/l)	3	2	2	2
MYOM3 (AU)	6	3	3	2
MSTN (ng/ml)	7	3	3	2
miR-1 (Log10 relative quantity)	5	3	2	2
miR-133a (Log10 relative quantity)	7	3	3	2
miR-206 (Log10 relative quantity)	4	2	2	2

reduced exercise frequency/intensity as disease progresses. In the DE50-MD dog, muscle volume increases until about nine months of age, at which point it plateaus through to at least 18 months of age. However, MRI results suggest that an increasing proportion of normal muscle tissue is replaced by fibrotic tissue and/or other cell infiltrates as the disease progresses<sup>49</sup>. In addition, preliminary activity monitoring data suggests that DE50-MD dog activity steadily decreases between three and 14 months of age, at which point activity intensity plateaus at a low level through to 18 months of age (Karimjee, Piercy *et al.*, unpublished work). These findings support the theory that a decrease in normal muscle tissue mass and activity intensity could be contributing to the gradual decline in CK activity in DE50-MD serum with age.

As seen other animal models of DMD (and in human patients), plasma CK activities varied considerably between individual animals in the DE50-MD colony<sup>48,50,51</sup>. Such variation reflects the marked sensitivity of this metric and hence its possible drawbacks when using it to demonstrate low to moderate therapeutic efficacy<sup>17,52</sup>. A substantial decline in CK activity would be required to demonstrate a treatment effect, but given its widespread clinical use and the low proposed sample sizes calculated in this study, we recommend its continued use.

MYOM3 was investigated as an alternative or adjunct DMD musculoskeletal biomarker, as this molecule exhibits lower inter-individual variation than CK, and is less influenced by age<sup>20</sup>. The presence of MYOM3 fragments in serum was an excellent biomarker for differentiating between the DE50-MD and WT

dog genotypes, and was markedly less variable between dogs than CK activity. A study in the GRMD model by Rouillon *et al.*<sup>20</sup> suggested that serum MYOM3 in the GRMD model might be age-independent up to at least 18 months of age, based on the finding that MYOM3 expression was very similar in two and 18-month-old dogs. In our DE50-MD model, continuous data from monthly blood samples (between one and 18 months) revealed that serum MYOM3 increased gradually from one month of age to a peak at six to 7 months and gradually decreased thereafter. This finding correlates with the trend seen in CK activity over the 18 month DE50-MD study period, and is supported by the fact that levels of MYOM3 in human DMD patient samples are also affected by age, with patients aged three to 10 years exhibiting concentrations 5 times higher on average than patients aged twelve to 20 years<sup>20</sup>. On a per-sample basis, however, we found only very weak correlation between CK and MYOM3 in the DE50-MD dogs; this might reflect the labile nature of CK release in damaged muscle, perhaps related to recent exercise<sup>51</sup> and the fact that elevations in serum/plasma CK activity might result from relatively minor loss of sarcolemmal integrity, whereas increases in MYOM3 might reflect more substantial muscle degeneration.

Another circulating biomarker that reliably distinguished between the DE50-MD and WT genotype is the muscle growth inhibitor MSTN. Serum MSTN was lower in DE50-MD compared to WT at all ages tested (three-monthly intervals, from three to 18 months of age), which agrees with recent data from the GRMD dog model<sup>34</sup>. Unlike CK and MYOM3, DE50-MD serum MSTN concentration did not decline with age, though as this biomarker is found at reduced concentration in DE50-MD serum (rather than the elevated CK and MYOM3), further reductions might be more challenging to detect. As MSTN is produced by skeletal muscle, decreased serum MSTN concentration might primarily be a consequence of lower overall muscle mass in DE50-MD dogs as compared to age-matched WT controls<sup>49</sup>. However, recent gene expression analysis of DMD patient and GRMD muscle biopsy samples suggests that there is active downregulation of the MSTN pathway<sup>31,34</sup>. Further work to evaluate the MSTN pathway in DE50-MD muscle and the influence of relative muscle mass, could help elucidate the mechanisms behind reduced MSTN in dystrophic individuals. Nonetheless, based on our sample size calculations, serum MSTN is an excellent biomarker of the DE50-MD phenotype.

Serum microRNAs (miRs) represent further biomarker candidates: use of qPCR to measure these molecules results in very high sensitivity, allowing accurate quantification over multiple orders of magnitude. We examined the presence of the three dystromiRs: miR-1, miR-133a and miR-206 in both healthy and DE50-MD serum, with levels in the latter being several orders of magnitude greater than in the former at all time points measured, suggesting that these three microRNAs are strong candidate biomarkers. The levels of these miRs in dystrophic serum are comparable with other, non-disease associated serum miRs (such as the reference miR-223), but their levels in healthy serum are close to zero. Serum miR-133a (alone) was however detected at elevated levels in one WT dog

for four consecutive months, a finding which suggests additional factors might influence serum miR content, but also illustrates the advantages of assessing multiple microRNAs. Indeed, the dystromiRs are a subset of a larger group of microRNAs known as the myomiRs (which also include miR-208, miR-486 and miR-499): these miRs are enriched in healthy skeletal muscle tissue, and their expression is held to be associated with myoblast differentiation, fibre-type choice and muscle regeneration<sup>53</sup>. Tissue myomiR concentrations alter in response to exercise and loading, however the presence of these microRNAs within serum is typically only found following bouts of extreme exercise (such as in marathon runners), with levels declining within days<sup>54</sup>. This indicates that, like CK and MYOM3, these markers are usually restricted to muscle, with their entering the circulation only as a consequence of damage rather than physiological release. Serum dystromiR levels might consequently be expected to decline not only following therapeutic intervention, but also with age- and disease-related muscle wasting (as with serum CK<sup>55,56</sup> and MYOM3<sup>20</sup>, above). Our analysis did reveal a modest but significant effect of genotype and age combined, but not of age alone: this implies that miRs do not globally alter with age, but might nevertheless do so in a genotype-specific fashion. Supporting this, miR-206 exhibited a modest decline with increasing age in dystrophic serum. Nevertheless, even in the oldest DE50-MD dogs (18 months), levels of all three miRs remained markedly elevated over healthy values, thus any muscle wasting-associated decline in their serum concentration is mostly likely modest in this model. DystromiRs consequently appear to represent a biomarker with comparable sensitivity and dynamic range to CK activity, though possibly with some of the same caveats attributed to CK; future work to assess dystromiR quantity following a bout of exercise or a therapeutic intervention will further determine their lability, and utility in pre-clinical trials using the DE50-MD model.

A principal component analysis (PCA) was performed to summarise the variation in the dataset of all biomarkers identified in this study. A single principal component was extracted, that explained 84% of the variation in the dataset, indicating that the six biomarkers were highly correlated. This principal component distinguished the two genotypes for all age-groups tested, with sufficient power to detect a 25% improvement in DE50-MD results towards WT values with small N numbers according to our sample size projections. We propose that this combined approach might have advantages over use of individual biomarkers, as the assessment might be less influenced by intra-animal variation, extreme biomarker sensitivity and lability, and effects of exercise.

When analysed individually, sample size calculations predict that CK activity, MYOM3, MSTN and relative quantities of miRs -1, -133a and -206 would require N numbers of seven or fewer dogs per genotype to detect at least a 25% improvement in DE50-MD values towards WT levels in response to interventions. To date, these blood biomarkers have not been evaluated in a longitudinal pre-clinical trial, thus whether they will normalise in response to a treatment, and the dynamics of such

a change, is yet to be determined. One of the strengths of the DE50-MD natural history study, of which blood biomarker analysis comprises just one facet, is that we have identified a wide range of biomarkers (including the use of MRI<sup>49</sup>, activity metrics, muscle physiology, cardiac muscle evaluation, neurological examination, and muscle histology (Piercy *et al.*, unpublished work)), maximising the likelihood of detecting any ameliorative response to therapy. In particular, it will be interesting to correlate these musculoskeletal blood-borne biomarkers, within the DE50-MD dogs, with longitudinal assessment of other aspects of their musculoskeletal phenotype.

Overall, our data suggests that this circulating musculoskeletal biomarker profile of the DE50-MD dog closely mimics that of human DMD patients, supporting the validity of the use of these dogs as an animal model for DMD. Of our candidate biomarkers, MYOM3 represents a valid alternative to CK activity as a marker of muscle structural damage, with the benefits of lower inter-individual variation. Serum MSTN concentration also reliably differentiates between genotypes, with the advantage of minimal age-associated variability. Lastly, our dystromiR panel represent high-sensitivity biomarkers that are present in DE50-MD serum at levels several orders of magnitude higher than WT dog serum. Analysing these biomarkers in combination also shows promise for future evaluation of therapeutics. This work contributes to establishing a repertoire of potential biomarkers in the DE50-MD dog. Future work will hence show if treatments that alleviate the dystrophic phenotype will restore these biomarkers towards WT dog levels, thus testing their efficacy for pre-clinical studies conducted in the DE50-MD dog model.

## Data availability

### Underlying data

Figshare: Underlying data - DE50-MD blood biomarker - Riddell, Hildyard, Harron, Wells, Piercy, <https://doi.org/10.6084/m9.figshare.17032370><sup>46</sup>.

This project contains the following underlying data:

- CK raw data.zip
- MYOM3 raw data.xlsx
- MSTN raw data.zip
- MiR raw data.zip
- PCA raw data.xlsx
- Sample ID details for all biomarkers.docx

Figshare: Underlying data - DE50-MD blood biomarker – MYOM3 WB TIFFs - Riddell, Hildyard, Harron, Wells, Piercy, <https://doi.org/10.6084/m9.figshare.17032430><sup>47</sup>.

This project contains the following underlying data:

- MYOM3 WB TIFFs (Folder contains all raw MYOM3 western blot images)

## Extended data

Figshare: Extended data - DE50-MD blood biomarker - Riddell, Hildyard, Harron, Wells, Piercy, <https://doi.org/10.6084/m9.figshare.17032436>.

This project contains the following extended data:

- Early vs late euthanasia raw data.xlsx
- Early vs late euthanasia figures.docx

## Reporting guidelines

Figshare: ARRIVE E10 Checklist - DE50-MD blood biomarker - Riddell, Hildyard, Harron, Wells, Piercy.pdf, <https://doi.org/10.6084/m9.figshare.17032370><sup>46</sup>.

Data are available under the terms of the [Creative Commons Attribution 4.0 International license \(CC-BY 4.0\)](https://creativecommons.org/licenses/by/4.0/).

## Acknowledgements

The authors thank colleagues at the Royal Veterinary College for their contributions to this work and staff within the Biological Services Unit for excellent and compassionate care of the animals. Special thanks to Dr. Yu-Mei Chang for advice on statistical analysis. **For the purpose of Open Access, the author has applied a CC BY public copyright license to any Author Accepted Manuscript version arising from this submission.**

## References

1. Mendell JR, Shilling C, Leslie ND, *et al.*: **Evidence-based path to newborn screening for Duchenne muscular dystrophy.** *Ann Neurol.* 2012; **71**(3): 304–13. [PubMed Abstract](#) | [Publisher Full Text](#)
2. Duan D, Goemans N, Takeda S, *et al.*: **Duchenne muscular dystrophy.** *Nat Rev Dis Primers.* 2021; **7**(1): 13. [PubMed Abstract](#) | [Publisher Full Text](#)
3. Luz MAM, Marques MJ, Santo Neto H: **Impaired regeneration of dystrophin-deficient muscle fibers is caused by exhaustion of myogenic cells.** *Braz J Med Biol Res.* 2002; **35**(6): 691–5. [PubMed Abstract](#) | [Publisher Full Text](#)
4. Blake DJ, Weir A, Newey SE, *et al.*: **Function and genetics of dystrophin and dystrophin-related proteins in muscle.** *Physiol Rev.* 2002; **82**(2): 291–329. [PubMed Abstract](#) | [Publisher Full Text](#)
5. Landfeldt E, Thompson R, Sejersen T, *et al.*: **Life expectancy at birth in Duchenne muscular dystrophy: a systematic review and meta-analysis.** *Eur J Epidemiol.* 2020; **35**(7): 643–653. [PubMed Abstract](#) | [Publisher Full Text](#) | [Free Full Text](#)
6. Walmsley GL, Arechavala-Gomez V, Fernandez-Fuente M, *et al.*: **A duchenne muscular dystrophy gene hot spot mutation in dystrophin-deficient cavalier king charles spaniels is amenable to exon 51 skipping.** *PLoS One.* 2010; **5**(1): e8647. [PubMed Abstract](#) | [Publisher Full Text](#) | [Free Full Text](#)
7. Aartsma-Rus A, van Ommen GJB: **Antisense-mediated exon skipping: a versatile tool with therapeutic and research applications.** *RNA.* 2007; **13**(10): 1609–24. [PubMed Abstract](#) | [Publisher Full Text](#) | [Free Full Text](#)
8. Amoasii L, Hildyard JCW, Li H, *et al.*: **Gene editing restores dystrophin expression in a canine model of Duchenne muscular dystrophy.** *Science.* 2018; **362**(6410): 86–91. [PubMed Abstract](#) | [Publisher Full Text](#) | [Free Full Text](#)
9. Bushby K, Finkel R, Birnkrant DJ, *et al.*: **Diagnosis and management of Duchenne muscular dystrophy, part 1: diagnosis, and pharmacological and psychosocial management.** *Lancet Neurol.* 2010; **9**(1): 77–93. [PubMed Abstract](#) | [Publisher Full Text](#)
10. Barthel BL, Cox D, Barbieri M, *et al.*: **Elevation of fast but not slow troponin I in the circulation of patients with Becker and Duchenne muscular dystrophy.** *Muscle Nerve.* 2021; **64**(1): 43–9. [PubMed Abstract](#) | [Publisher Full Text](#) | [Free Full Text](#)
11. Burch PM, Pogoryelova O, Goldstein R, *et al.*: **Muscle-Derived Proteins as Serum Biomarkers for Monitoring Disease Progression in Three Forms of Muscular Dystrophy.** *J Neuromuscul Dis.* 2015; **2**(3): 241–55. [PubMed Abstract](#) | [Publisher Full Text](#) | [Free Full Text](#)
12. Barthélémy I, Uriarte A, Drougard C, *et al.*: **Effects of an immunosuppressive treatment in the GRMD dog model of Duchenne muscular dystrophy.** *PLoS One.* 2012; **7**(11): e48478. [PubMed Abstract](#) | [Publisher Full Text](#) | [Free Full Text](#)
13. Nakamura A, Kobayashi M, Kuraoka M, *et al.*: **Initial pulmonary respiration causes massive diaphragm damage and hyper-CKemia in Duchenne muscular dystrophy dog.** *Sci Rep.* 2013; **3**: 2183. [PubMed Abstract](#) | [Publisher Full Text](#) | [Free Full Text](#)
14. Kuraoka M, Kimura E, Nagata T, *et al.*: **Serum Osteopontin as a Novel Biomarker for Muscle Regeneration in Duchenne Muscular Dystrophy.** *Am J Pathol.* 2016; **186**(5): 1302–12. [PubMed Abstract](#) | [Publisher Full Text](#)
15. Boca SM, Nishida M, Harris M, *et al.*: **Discovery of Metabolic Biomarkers for Duchenne Muscular Dystrophy within a Natural History Study.** *PLoS One.* 2016; **11**(4): e0153461. [PubMed Abstract](#) | [Publisher Full Text](#) | [Free Full Text](#)
16. Coenen-Stass AML, Betts CA, Lee YF, *et al.*: **Selective release of muscle-specific, extracellular microRNAs during myogenic differentiation.** *Hum Mol Genet.* 2016; **25**(18): 3960–3974. [PubMed Abstract](#) | [Publisher Full Text](#) | [Free Full Text](#)
17. Aktas M, Lefebvre HP, Toutain PL, *et al.*: **Disposition of creatine kinase activity in dog plasma following intravenous and intramuscular injection of skeletal muscle homogenates.** *J Vet Pharmacol Ther.* 1995; **18**(1): 1–6. [PubMed Abstract](#) | [Publisher Full Text](#)
18. Le Guiner C, Servais L, Montus M, *et al.*: **Long-term microdystrophin gene therapy is effective in a canine model of Duchenne muscular dystrophy.** *Nat Commun.* 2017; **8**(1): 16105. [PubMed Abstract](#) | [Publisher Full Text](#) | [Free Full Text](#)
19. Agarkova I, Perriard JC: **The M-band: an elastic web that crosslinks thick filaments in the center of the sarcomere.** *Trends Cell Biol.* 2005; **15**(9): 477–85. [PubMed Abstract](#) | [Publisher Full Text](#)
20. Rouillon J, Poupot J, Zoccevic A, *et al.*: **Serum proteomic profiling reveals fragments of MYOM3 as potential biomarkers for monitoring the outcome of therapeutic interventions in muscular dystrophies.** *Hum Mol Genet.* 2015; **24**(17): 4916–32. [PubMed Abstract](#) | [Publisher Full Text](#) | [Free Full Text](#)
21. Hathout Y, Marathi RL, Rayavarapu S, *et al.*: **Discovery of serum protein biomarkers in the mdx mouse model and cross-species comparison to Duchenne muscular dystrophy patients.** *Hum Mol Genet.* 2014; **23**(24): 6458–69. [PubMed Abstract](#) | [Publisher Full Text](#) | [Free Full Text](#)
22. Binns MM, Boehler DA, Lambert DH: **Identification of the myostatin locus (MSTN) as having a major effect on optimum racing distance in the Thoroughbred horse in the USA.** *Anim Genet.* 2010; **41** Suppl 2: 154–8. [PubMed Abstract](#) | [Publisher Full Text](#)
23. McPherron AC, Lawler AM, Lee SJ: **Regulation of skeletal muscle mass in mice by a new TGF-beta superfamily member.** *Nature.* 1997; **387**(6628): 83–90. [PubMed Abstract](#) | [Publisher Full Text](#)
24. Mosher DS, Quignon P, Bustamante CD, *et al.*: **A Mutation in the Myostatin Gene Increases Muscle Mass and Enhances Racing Performance in Heterozygote Dogs.** *PLoS Genet.* 2007; **3**(5): e79. [PubMed Abstract](#) | [Publisher Full Text](#) | [Free Full Text](#)
25. Wagner KR, McPherron AC, Winik N, *et al.*: **Loss of myostatin attenuates severity of muscular dystrophy in mdx mice.** *Ann Neurol.* 2002; **52**(6): 832–6. [PubMed Abstract](#) | [Publisher Full Text](#)
26. Béchir N, Pecchi E, Vilmen C, *et al.*: **ActRIIB blockade increases force-generating capacity and preserves energy supply in exercising mdx mouse muscle in vivo.** *FASEB J.* 2016; **30**(10): 3551–62. [PubMed Abstract](#) | [Publisher Full Text](#)
27. Dumonceaux J, Marie S, Beley C, *et al.*: **Combination of myostatin pathway**



- interference and dystrophin rescue enhances tetanic and specific force in dystrophic mdx mice. *Mol Ther*. 2010; **18**(5): 881–7.  
[PubMed Abstract](#) | [Publisher Full Text](#) | [Free Full Text](#)
28. Wagner KR, Fleckenstein JL, Amato AA, et al.: **A phase I/II trial of MYO-029 in adult subjects with muscular dystrophy.** *Ann Neurol*. 2008; **63**(5): 561–71.  
[PubMed Abstract](#) | [Publisher Full Text](#)
29. Minetti GC, Colussi C, Adami R, et al.: **Functional and morphological recovery of dystrophic muscles in mice treated with deacetylase inhibitors.** *Nat Med*. 2006; **12**(10): 1147–50.  
[PubMed Abstract](#) | [Publisher Full Text](#)
30. Bettica P, Petrini S, D'Oria V, et al.: **Histological effects of givinostat in boys with Duchenne muscular dystrophy.** *Neuromuscul Disord*. 2016; **26**(10): 643–9.  
[PubMed Abstract](#) | [Publisher Full Text](#)
31. Mariot V, Joubert R, Houdé C, et al.: **Downregulation of myostatin pathway in neuromuscular diseases may explain challenges of anti-myostatin therapeutic approaches.** *Nat Commun*. 2017; **8**(1): 1859.  
[PubMed Abstract](#) | [Publisher Full Text](#) | [Free Full Text](#)
32. Anaya-Segura MA, García-Martínez FA, Montes-Almanza LA, et al.: **Non-Invasive Biomarkers for Duchenne Muscular Dystrophy and Carrier Detection.** *Molecules*. 2015; **20**(6): 11154–72.  
[PubMed Abstract](#) | [Publisher Full Text](#) | [Free Full Text](#)
33. Burch PM, Pogoryelova O, Palandra J, et al.: **Reduced serum myostatin concentrations associated with genetic muscle disease progression.** *J Neurol*. 2017; **264**(3): 541–53.  
[PubMed Abstract](#) | [Publisher Full Text](#)
34. Mariot V, Le Guiner C, Barthélémy I, et al.: **Myostatin Is a Quantifiable Biomarker for Monitoring Pharmaco-gene Therapy in Duchenne Muscular Dystrophy.** *Mol Ther Methods Clin Dev*. 2020; **18**: 415–21.  
[PubMed Abstract](#) | [Publisher Full Text](#) | [Free Full Text](#)
35. Alles J, Fehlmann T, Fischer U, et al.: **An estimate of the total number of true human miRNAs.** *Nucleic Acids Res*. 2019; **47**(7): 3353–64.  
[PubMed Abstract](#) | [Publisher Full Text](#) | [Free Full Text](#)
36. Dong H, Li J, Huang L, et al.: **Serum MicroRNA Profiles Serve as Novel Biomarkers for the Diagnosis of Alzheimer's Disease.** *Dis Markers*. 2015; **2015**: 625659.  
[PubMed Abstract](#) | [Publisher Full Text](#) | [Free Full Text](#)
37. Correia CN, Nalpas NC, McLoughlin KE, et al.: **Circulating microRNAs as Potential Biomarkers of Infectious Disease.** *Front Immunol*. 2017; **8**: 118.  
[PubMed Abstract](#) | [Publisher Full Text](#) | [Free Full Text](#)
38. Wang H, Peng R, Wang J, et al.: **Circulating microRNAs as potential cancer biomarkers: the advantage and disadvantage.** *Clinical Epigenetics*. 2018; **10**(1): 59.  
[PubMed Abstract](#) | [Publisher Full Text](#) | [Free Full Text](#)
39. Cacchiarelli D, Legnini I, Martone J, et al.: **miRNAs as serum biomarkers for Duchenne muscular dystrophy.** *EMBO Mol Med*. 2011; **3**(5): 258–65.  
[PubMed Abstract](#) | [Publisher Full Text](#) | [Free Full Text](#)
40. Hu J, Kong M, Ye Y, et al.: **Serum miR-206 and other muscle-specific microRNAs as non-invasive biomarkers for Duchenne muscular dystrophy.** *J Neurochem*. 2014; **129**(5): 877–83.  
[PubMed Abstract](#) | [Publisher Full Text](#)
41. Zaharieva IT, Calissano M, Scoto M, et al.: **Dystromirs as serum biomarkers for monitoring the disease severity in Duchenne muscular Dystrophy.** *PLoS One*. 2013; **8**(11): e80263.  
[PubMed Abstract](#) | [Publisher Full Text](#) | [Free Full Text](#)
42. Mizuno H, Nakamura A, Aoki Y, et al.: **Identification of muscle-specific microRNAs in serum of muscular dystrophy animal models: promising novel blood-based markers for muscular dystrophy.** *PLoS One*. 2011; **6**(3): e18388.  
[PubMed Abstract](#) | [Publisher Full Text](#) | [Free Full Text](#)
43. Jeanson-Leh L, Lameth J, Krime S, et al.: **Serum Profiling Identifies Novel Muscle miRNA and Cardiomyopathy-Related miRNA Biomarkers in Golden Retriever Muscular Dystrophy Dogs and Duchenne Muscular Dystrophy Patients.** *Am J Pathol*. 2014; **184**(11): 2885–98.  
[PubMed Abstract](#) | [Publisher Full Text](#)
44. Lau J, Nettifee JA, Early PJ, et al.: **Clinical characteristics, breed differences, and quality of life in North American dogs with acute steroid-responsive meningitis-arteritis.** *J Vet Intern Med*. 2019; **33**(4): 1719–27.  
[PubMed Abstract](#) | [Publisher Full Text](#) | [Free Full Text](#)
45. Kreidler SM, Muller KE, Grunwald GK, et al.: **GLIMPSE: Online Power Computation for Linear Models with and without a Baseline Covariate.** *J Stat Softw*. 2013; **54**(10): i10.  
[PubMed Abstract](#) | [Publisher Full Text](#) | [Free Full Text](#)
46. Riddell D, Hildyard J, Harron R, et al.: **Underlying data - DE50-MD blood biomarker - Riddell, Hildyard, Harron, Wells, Piercy.** *figshare*. Dataset, 2021. <http://www.doi.org/10.6084/m9.figshare.17032370.v1>
47. Riddell D, Hildyard J, Harron R, et al.: **Underlying data - DE50-MD blood biomarker - MYOM3 WB TIFFs - Riddell, Hildyard, Harron, Wells, Piercy.** *figshare*. Dataset, 2021. <http://www.doi.org/10.6084/m9.figshare.17032430.v1>
48. Sun SC, Peng YS, He JB: **[Changes of serum creatine kinase levels in children with Duchenne muscular dystrophy].** *Zhongguo Dang Dai Er Ke Za Zhi*. 2008; **10**(1): 35–7.  
[PubMed Abstract](#)
49. Hornby NL, Drees R, Harron R, et al.: **Musculoskeletal Magnetic Resonance Imaging in the DE50-MD dog model of Duchenne Muscular Dystrophy.** *Neuromuscul Disord*. 2021; **31**(8): 736–751.  
[PubMed Abstract](#) | [Publisher Full Text](#) | [Free Full Text](#)
50. Kornegay JN: **The golden retriever model of Duchenne muscular dystrophy.** *Skelet Muscle*. 2017; **7**(1): 9.  
[PubMed Abstract](#) | [Publisher Full Text](#) | [Free Full Text](#)
51. Acosta AR, Van Wie E, Stoughton WB, et al.: **Use of the six-minute walk test to characterize golden retriever muscular dystrophy.** *Neuromuscul Disord*. 2016; **26**(12): 865–72.  
[PubMed Abstract](#) | [Publisher Full Text](#)
52. Lefebvre HP, Laroute V, Braun JP, et al.: **Non-invasive and quantitative evaluation of post-injection muscle damage by pharmacokinetic analysis of creatine kinase release.** *Vet Res*. 1996; **27**(4–5): 343–61.  
[PubMed Abstract](#)
53. Diniz GP, Wang DZ: **Regulation of Skeletal Muscle by microRNAs.** *Compr Physiol*. 2016; **6**(3): 1279–94.  
[PubMed Abstract](#) | [Publisher Full Text](#)
54. Baggish AL, Park J, Min PK, et al.: **Rapid upregulation and clearance of distinct circulating microRNAs after prolonged aerobic exercise.** *J Appl Physiol (1985)*. 2014; **116**(5): 522–31.  
[PubMed Abstract](#) | [Publisher Full Text](#) | [Free Full Text](#)
55. Aartsma-Rus A, Spitali P: **Circulating Biomarkers for Duchenne Muscular Dystrophy.** *J Neuromuscul Dis*. 2015; **2**(s2): S49–S58.  
[PubMed Abstract](#) | [Publisher Full Text](#) | [Free Full Text](#)
56. Zatz M, Rapaport D, Vainzof M, et al.: **Serum creatine-kinase (CK) and pyruvate-kinase (PK) activities in Duchenne (DMD) as compared with Becker (BMD) muscular dystrophy.** *J Neurol Sci*. 1991; **102**(2): 190–6.  
[PubMed Abstract](#) | [Publisher Full Text](#)

# Open Peer Review

Current Peer Review Status: 

---

## Version 1

Reviewer Report 17 January 2022

<https://doi.org/10.21956/wellcomeopenres.19235.r47721>

© 2022 Rusbridge C. This is an open access peer review report distributed under the terms of the [Creative Commons Attribution License](#), which permits unrestricted use, distribution, and reproduction in any medium, provided the original work is properly cited.



Clare Rusbridge 

The School of Veterinary Medicine, University of Surrey, Guildford, UK

### Longitudinal assessment of blood-borne musculoskeletal disease biomarkers in the DE50-MD dog model of Duchenne muscular dystrophy

This study established if a large animal model is appropriate to study response to a therapeutic intervention. Compared to WT dogs, DE50-MD dogs had substantially higher circulating creatine kinase (CK) activities, myomesin-3 (MYOM3), and the dystromiRs miR-1, miR-133a and miR-206, but significantly lower serum myostatin concentrations. An age-associated pattern, similar to that observed in DMD patients, was seen for CK and MYOM3. The blood biomarker profile closely mimics that of DMD patients, supporting the hypothesis that this DMD model would be suitable for use in pre-clinical trials. The study achieved its hypothesis. Overall, I felt that this was a straightforward question, an appropriate study to answer that question with pertinent results.

My questions are minor.

1. I would like greater clarification about how much exercise the dogs had. How big are the outside paddocks and is this the only exercise the dogs have? I would also like to know how big the "large pens are" and what it is the range of group size. Also were wild type dogs housed with affected dogs? Myomesin-3 is a biomarker for exercise-induced muscle damage so I would like an indication if the dogs were able to achieve a what would be regarded as a normal exercise level (for a dog).
2. Page 5 – do you mean congenital elbow dysplasia or developmental elbow dysplasia? I suspect the latter.
3. Did you do exercise tolerance tests in the affected dogs. After reading this paper I was left with the question – yes these seem like relevance biomarkers, but do they reflect clinical disease – i.e. is a normalisation of Myomesin-3 likely to result in a phenotypic improvement or were dogs with higher Myomesin-3 phenotypically worse (with the exception of the dysphagic dogs which was phenotypically worse).

**Is the work clearly and accurately presented and does it cite the current literature?**

Yes

**Is the study design appropriate and is the work technically sound?**

Yes

**Are sufficient details of methods and analysis provided to allow replication by others?**

Yes

**If applicable, is the statistical analysis and its interpretation appropriate?**

Yes

**Are all the source data underlying the results available to ensure full reproducibility?**

Yes

**Are the conclusions drawn adequately supported by the results?**

Yes

**Competing Interests:** No competing interests were disclosed.

**Reviewer Expertise:** I am a veterinary neurologist and a clinician that specialises in muscle disease. Therefore I am not as competent as many in assessing the validity of the assays used to measure the biomarkers. I am also not an expert statistician.

**I confirm that I have read this submission and believe that I have an appropriate level of expertise to confirm that it is of an acceptable scientific standard.**

---